



# Review of the Council's Working Structure

Becky Box  
Assistant Director Central Services



# Request from Cllr Morley

“To provide an overview of the Council’s working structure to support the Corporate Business Plan. (Organisational chart setting out the FTE that has been allocated to service areas to ensure delivery of the Corporate Business Plan)”



# Overview

- Information based on 1<sup>st</sup> February 2022
- Permanent establishment = 517 posts
- Permanent FTE = 472.81
- New structure wef 01/01/2020
- Services grouped into 8 service areas



# Overview Continued

- Structure designed to ensure delivery of quality services whilst also delivering a range of capital investment projects
- Charts show the functions/services delivered by each service area
- Charts show Portfolio Holders for each service area to show link to Corporate Business Plan



# Overview Continued

- A small number of Fixed Term and temporary employees are also employed (these are not included in the information provided on the charts)
- FT and Temp Headcount = 16
- FT and Temp FTE = 14.81

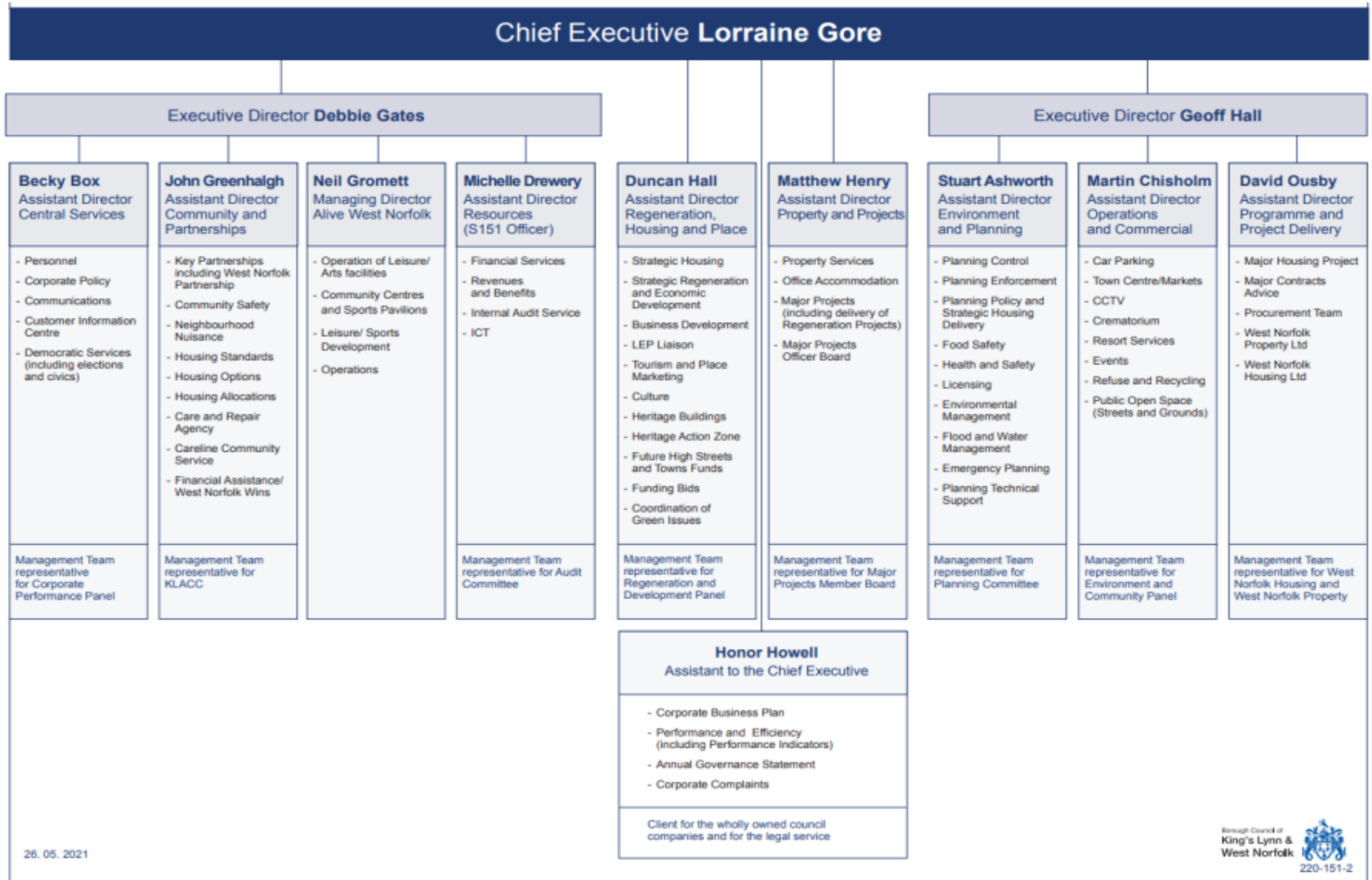


# Overview Continued

- Alive West Norfolk employees are not included as they are employed by AWN, not the Council
- The AWN Managing Director is shown on the Extended Management Team structure to show where this post links via the AWN Board



# Extended Management Team



26. 05. 2021



# Number and FTE of Posts

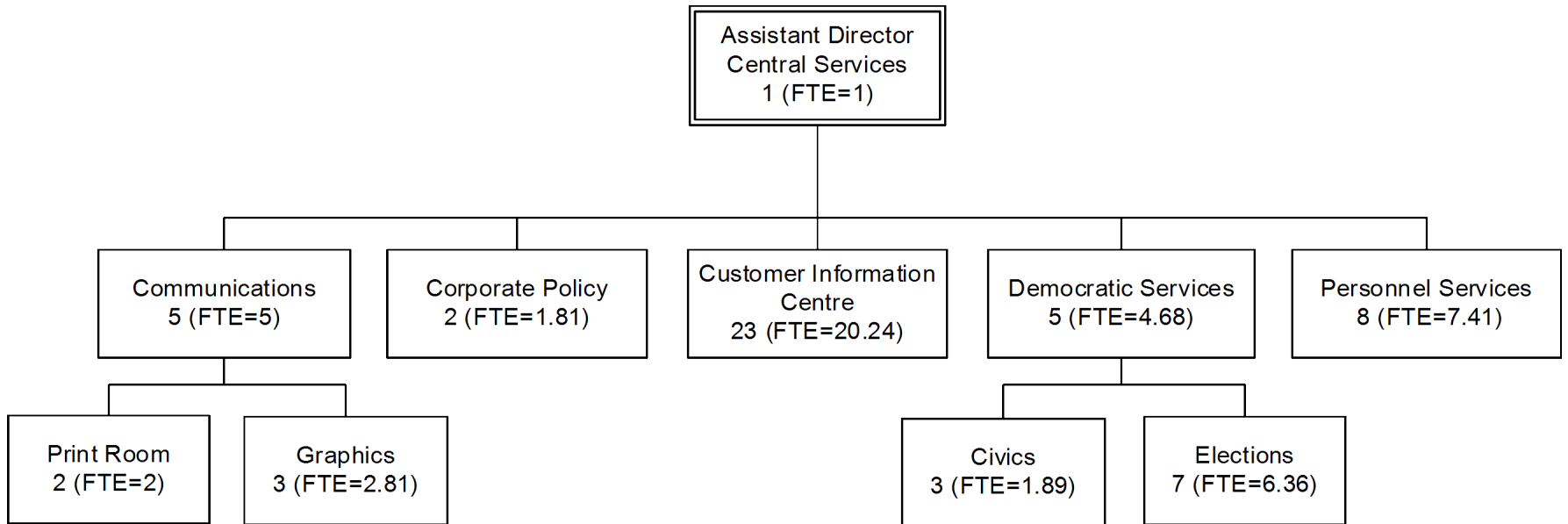
Allocation of permanent posts and FTE at 01/02/22:

	Number	FTE
Chief Executive	1	1
Executive Directors	2	2
Assistant Director Central Services	59	53.20
Assistant Director Community & Partnerships	64	58.94
Assistant Director Environment and Planning	75	69.46
Assistant Director Operations and Commercial	152	146.20
Assistant Director Programme and Project Delivery	10	9.81
Assistant Director Property and Projects	34	23.41
Assistant Director Regeneration, Housing & Place	12	11.66
Assistant Director Resources & S151 Officer	103	92.14
Assistant to the Chief Executive	4	4
Secretary/PA to Chief Executive and Leader	1	1
Total	517	472.82





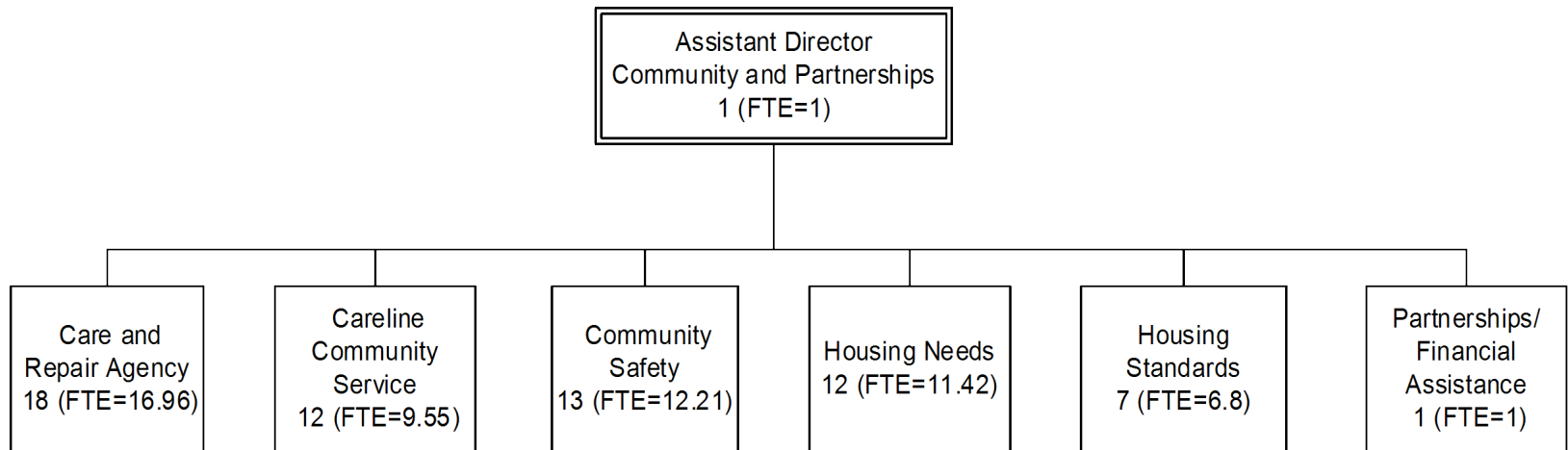
# Central Services



Portfolio Holders:  
Leader, Corporate Services



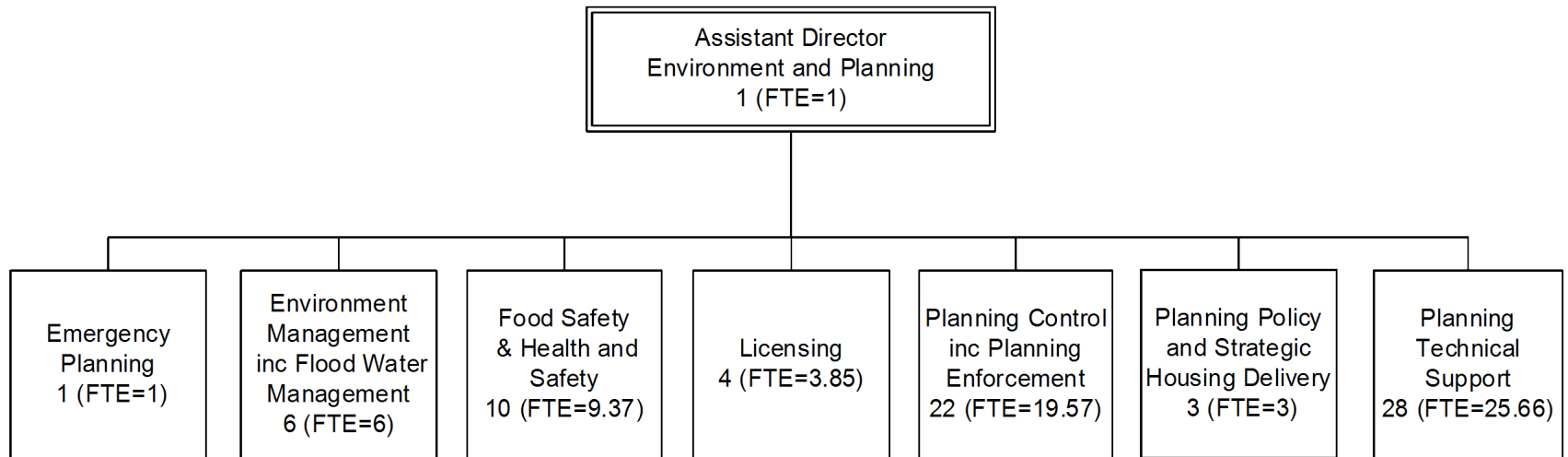
# Community & Partnerships



Portfolio Holders:  
People and Communities, Environment,



# Environment & Planning

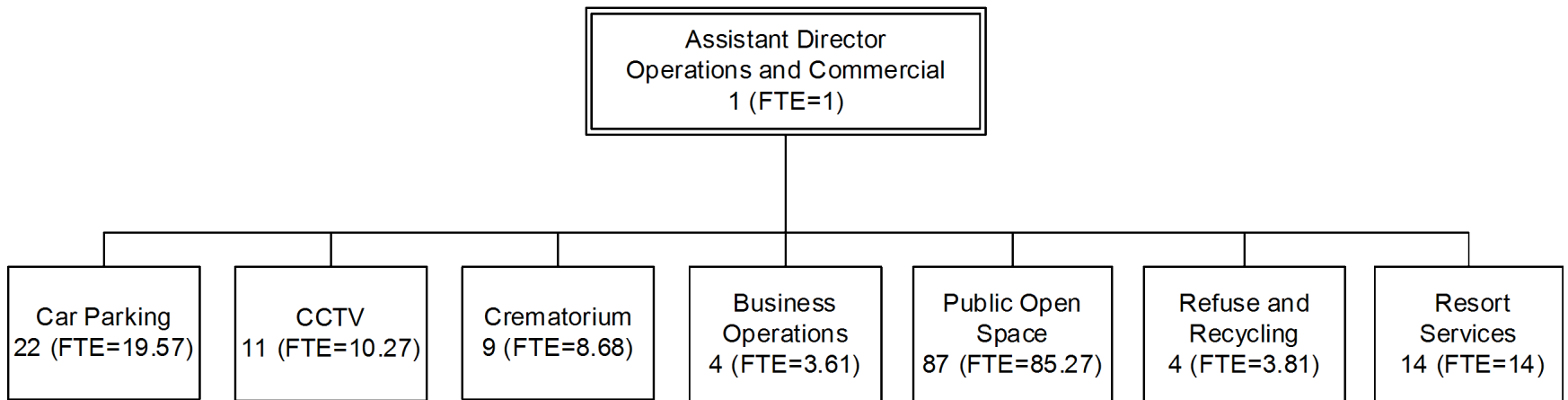


Portfolio Holders:

Development & Regeneration, Environment, Leader



# Operations & Commercial



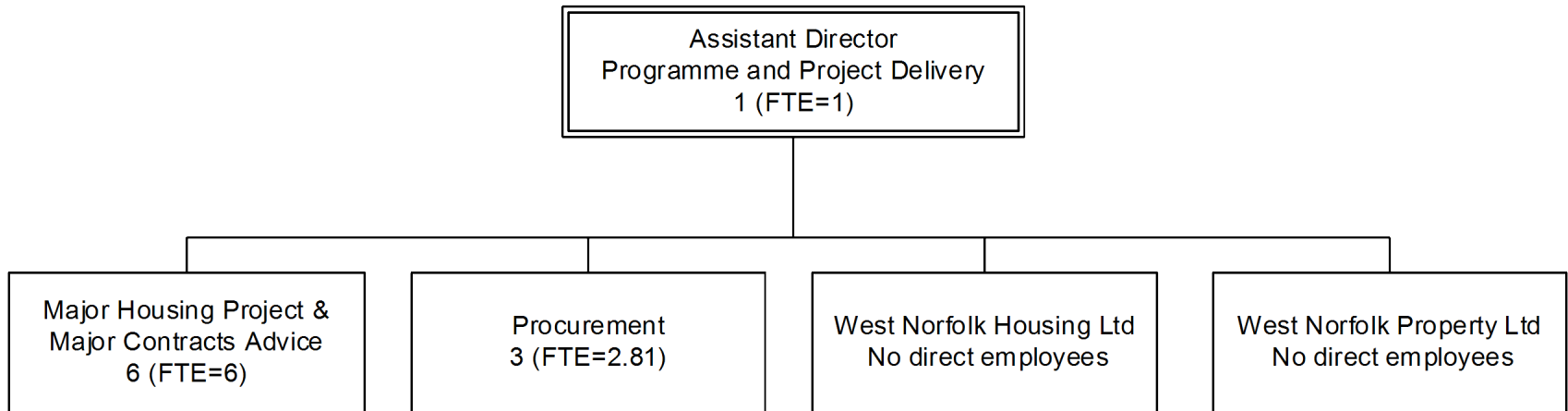
Portfolio Holders:

Business, Culture & Heritage, Environment, Corporate Services

Development & Regeneration



# Programme & Project Delivery

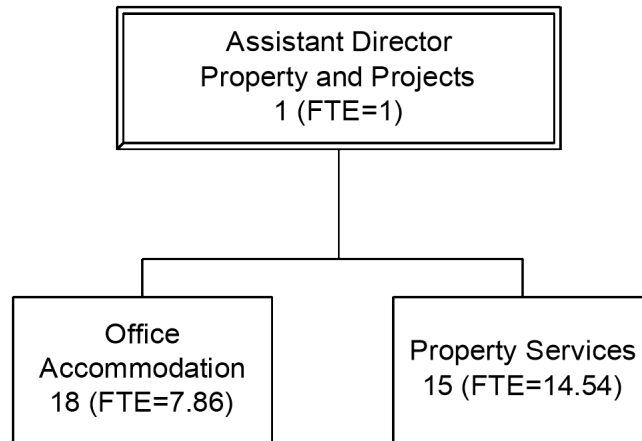


Portfolio Holders:

Business, Culture & Heritage, Development & Regeneration



# Property and Projects

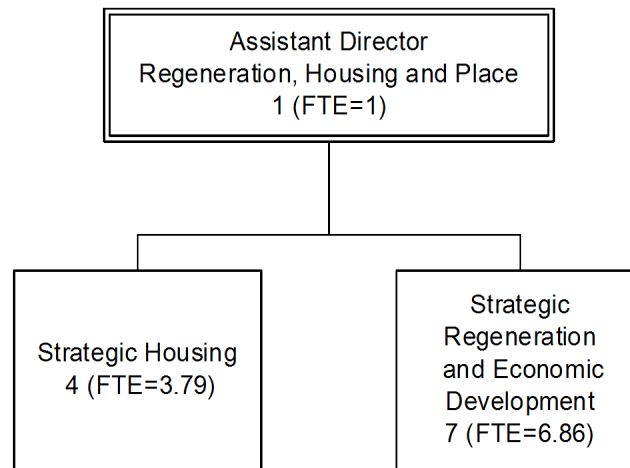


Portfolio Holders:

Business, Culture & Heritage, Property, Corporate Services



# Regeneration, Housing & Place

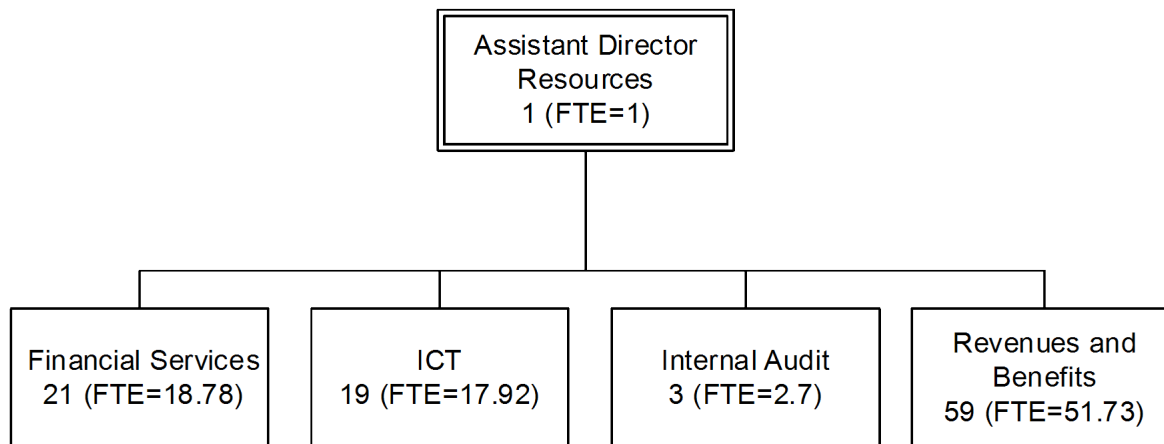


Portfolio Holders:

Business, Culture & Heritage, People & Communities, Development & Regeneration



# Resources



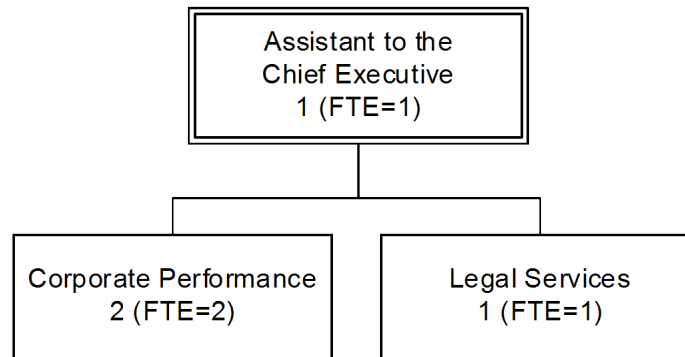
Portfolio Holder:

Finance, People & Communities, Corporate Services





# Assistant to the Chief Executive



Portfolio Holder:  
Leader, Corporate Services

