

**NORFOLK COUNTY COUNCIL**

**BOROUGH COUNCIL OF KING'S LYNN AND WEST NORFOLK**

**KING'S LYNN AND WEST NORFOLK AREA MUSEUMS COMMITTEE**

**Notes of a Meeting of the above Committee held on  
Monday 5 January 2009 at 2.15 pm  
In the Committee Suite, Ground Floor, King's Court,  
Chapel Street, King's Lynn**

**PRESENT:**

Councillor Mrs E A Nockolds	- Borough Council of King's Lynn & West Norfolk
Councillor A M J Tyler	- Borough Council of King's Lynn & West Norfolk
Councillor Mrs J Murphy	- Borough Council of King's Lynn & West Norfolk
Councillor D Murphy	- Borough Council of King's Lynn & West Norfolk
Councillor M L Langwade	- Borough Council of King's Lynn & West Norfolk
Councillor A J Wright	- Norfolk County Council
Councillor Mrs J Brown	- Norfolk County Council
Councillor Mrs H Bolt	- Norfolk County Council
Mr T Humphreys	- Tourism Manager King's Lynn & West Norfolk
Dr R Hanley	- Norfolk Museums and Archaeology Service
Mr T Thorpe	- Norfolk Museums and Archaeology Service
Mr D Gurney	- Norfolk Museums and Archaeology Services (for item 4 only)

Apologies for absence were received from Abigail Rawlings (Youth Representative), County Councillors J Collop and Mrs J Eells, David Higgins and Vanessa Trevelyan

**1 MINUTES**

The Minutes of the Meeting held on 6 October 2008 were confirmed as a correct record.

**2 DECLARATIONS OF INTEREST**

County Councillor Mrs H Bolt and Borough Councillor D Murphy declared an interest as being a Trustee of the Green Quay.

**3 ARCHAEOLOGY UPDATE FROM THE ACTING COUNTY ARCHAEOLOGIST**

The Committee received a presentation and Archaeology Update from David Gurney, Acting County Archaeologist.

The presentation highlighted the following excavations undertaken in 2007:

- Barton Bendish, Spread Eagle Public House

- Brancaster, Tranquility, Marsh Lane
- East Rudham, Coxford Abbey Quarry
- East Winch, Fosters End Drove, Blackborough End
- King's Lynn, Austin Street
- King's Lynn, Greyfriars
- King's Lynn, The Shrubbery, Blackfriars Road
- Leziate, Holt House Farm
- Marham, The Old Bell
- Southery, Westgate Street
- West Dereham, Crimplasham Quarry

A copy of the presentation is attached at Appendix 1 to the minutes.

It was noted that a written report was also circulated with the Agenda for information.

Following the presentation the Committee was invited to ask questions/ comment, a summary of which is set out below:

- The Acting County Archaeologist estimated the measurement of the first gold crossbow brooch found (illustrated on slide 3) to be around 2.5 – 3 inch in length and explained that the Museums & Archaeology Service was barred from placing a monetary value on such an item. It was confirmed that the brooch was still in private ownership.
- Was there a reasonable picture available of industrial mass production during Roman times in Britain? **Response: There is quite a lot of information available, for example, on certain industries such as pottery and salt production sites in West Norfolk and the Fens. It was noted that the evidence was “thinner” for industries such as coin manufacture, metal work, jewellery and glass.**
- What was the proportion of imported items on a site? **Response: The number of imported items is generally low. However, two remarkable objects made of elephant ivory had been discovered at Feltwell Roman villa.**
- Reference was made to certain artefacts from elsewhere in the Roman Empire brought to Britain when the Roman army moved around.
- The comment was made that certain items were extensively traded. **Imported samian ware pottery is found on most Roman sites.**
- Most Roman coins in circulation were produced on the continent. Mint marks on the coins can identify their origins.
- The Norfolk Historic Environment Record and the Norfolk Heritage Explorer database were outlined ([www.heritage.norfolk.gov.uk](http://www.heritage.norfolk.gov.uk))
- The Norfolk Museums & Archaeology Service had recently been awarded a British Archaeological Award for the Norfolk Heritage Explorer project.
- A slide was displayed which detailed how the Norfolk landscape was being managed through Environmental Stewardship. **In response to questions, the Acting County Archaeologist confirmed that Natural England ensured that applications for ES protected archaeological**

sites. The Committee was informed that the NM&AS has its own very successful initiative – the Norfolk Monuments Management Project - specifically for farmers where advice was available on managing the landscape and archaeological sites. The NM&AS also routinely scrutinises planning application lists by downloading details from the Borough Council’s Website, and if felt necessary will write direct to the Planning Officer with advice on the archaeological implications and recommending an archaeological condition be attached to the planning permission.

- Was the satellite system used for aerial photographs? **Response: No, but Google Earth has proved to be quite useful,**
- Was there an opportunity to use the EU satellite system? An example was given of this system being used in West Norfolk last year to check land claims by farmers. **Response: The Acting County Archaeologist advised that he was aware of the resource, but that access to it had not so far been obtained.**
- Reference was made to the coastal surveys and threats to the historic environment by storm, floods and erosion.
- It was noted that a very successful planning seminar entitled “Getting it Right” had been previously hosted by the Borough Planning Officers for developers, and this encouraged developers to seek early advice on the archaeological implications of development proposals.
- Should the Time Team be invited to Norfolk? **Response: The Time Team had previously visited Bawsey approximately 7 to 8 years ago – no report had yet been received. If the Team was invited to visit the NORA project, etc a slightly different approach would be required. Further investigations by Time Team in Norfolk might be useful, but would need to be carefully planned and managed.**
- Reference was made to ensure there was good PR in relation to the Hanse link. The Acting County Archaeologist would contact Dr Paul Richards to see if a suitable project could be identified.

Historic Environment Surveys Members were reminded that it had been approximately 40 years since an archaeological survey had been conducted in King’s Lynn. The Committee was asked to consider if they felt it appropriate for such a survey to be undertaken in King’s Lynn as part of the Growth Point work. The cost of the desk based survey might be in the region of £25,000. Existing data would be utilised and information reviewed. The survey would be conducted over a period of several months and would gear outputs to fit in with the precise location and give the most useful products. It was suggested that growth point funding and a contribution from English Heritage be obtained to assist with the cost of the survey.

Reference was made to an update of a previous survey undertaken by Vanessa Parker. The Acting County Archaeologist advised that he was not aware that the previous survey had been updated, but that elements of the research had moved forward.

**RESOLVED:** (1) That the report be noted.

(2) That the Acting County Archaeologist be thanked for his presentation and written report.

(3) The Committee supported the idea of an Historic Environment Survey and agreed that further discussions be held with the Borough Council's Regeneration Team.

(4) The Committee asked the Acting County Archaeologist to congratulate all relevant staff on receiving the British Archaeological Award.

#### **4 REPORTS OF THE AREA MUSEUMS OFFICER**

##### **(a) King's Lynn Museums Report, October to December 2008**

The Area Museums Officer presented a report which provided Members with information on King's Lynn Museums from October to December 2008.

The following points were highlighted by the Area Museums Officer.

- Lynn Museum – currently in its free admission period, which runs from October 2008 to March 2009. A MOSAIC postcode survey is currently being undertaken. This will enable a comparison of the visitor profile to be made for charging and non-charging periods. The free admission offer was highlighted in the Borough Council's Your Council and the Norfolk County Council publication – Your Norfolk.
- Norfolk Museums and Archaeology Service (NMAS) organised and hosted a number of events as part of the Food Fortnight programme organised by the West Norfolk Partnership.
- Other Museum Developments – Work is continuing on the second phase of collections rationalisation, with the focus on social history collections stored in the Town Hall and at Aickmans Yard. King's Lynn Museums are hosting a UEA postgraduate Museology student placement across the current academic year. A major review and re-organisation of stored collections is underway. Under the terms of the 2009-09 NMAS Business Plan, the Town House Museum is closed to the public until 14 February. During the closure period, the Town House will remain open for schools and other pre-booked groups.
- Friends of King's Lynn Museums – the Friends are developing their 2009 programme for members and membership levels remain strong. The Friends held their AGM at Lynn Museum on 13 October. A successful lunchtime talk was held on 8 December. The Friends continue to raise funds to support the work of the Museums.
- Partnership Projects – NMAS is continuing to assist the Borough Council with the ongoing review of the Town Hall and other heritage assets and also continuing to work with the Borough Council on the Walks restoration project. NMAS is currently co-ordinating the design and installation of new external graphic panels for the Walks. King's Lynn Museums continue to lead the Greater Fens Museums Partnership as part of the NMAS role as lead partner for the East of England Hub for Renaissance in the Regions. The report detailing the

work of the Fenland partnership to date had recently been published and copies were available if Members wished to obtain one following today's meeting. Stuart Hall had been appointed as Fenland Project Officer following the departure of Marie Kennedy. A recruitment process was in place to recruit to the Community Outreach Officer post.

- Learning and Outreach – A new Learning Officer (Melissa Hawker) had been appointed and took up her post at the beginning of December. Following the appointment of Stuart Hall to the post of Fenland Project Officer, a recruitment process is underway for the vacant Community Outreach Officer post.
- October half-term – family learning event Raiders and Invaders was organised in the Town Hall on 28 October.
- School bookings and enquiries during the Autumn term have been encouraging.
- King's Lynn Museums continue to offer a broad range of adult education courses in partnership with the NCC Adult Education Department.

The visitor figures to King's Lynn Museums were tabled.

In response to questions, the Area Museums Officer confirmed that liaison with the Arts Centre staff would take place regarding the HLF Young Roots programme. The project would enable youth groups to explore aspects of local heritage. Each group would create their own exhibition based on film and would receive relevant training and be supported throughout the project. If there were any further interested organisations wishing to participate, Members were invited to forward details to the Area Museums Officer direct.

Councillor Tyler reported that the events organised by the Museums Service were popular and explained that people had difficulty booking for specific events due to such high demand. He made reference to the art exhibition Walter Dexter recently on show at the Lynn Museum and asked if in future a date be inserted on exhibitions in order to denote the period of the development of a particular artist. In response the Area Museums Officer undertook to forward this request to appropriate officers.

The Chairman thanked the Area Museums Officer for the detailed report.

**RESOLVED:** (1) That the report be noted.

(2) The Committee wished to formally record its appreciation to Stuart Hall for the work he had undertaken over the past 4 years.

(3) The results of the Postcode Survey would be presented to the next meeting.

**(b) Review of Collections in the King's Lynn Museum**

The Curator of the Lynn Museum presented a report which set out the background to the view of collections in King's Lynn and recommended deaccessioning a group of social history items that were in poor condition and outside the current NMAS Acquisition and Disposal policy.

Members were informed that collecting within the NMAS was undertaken in accordance with the Acquisition and Disposal Policy approved by Committee. This was reviewed every five years and set out the strengths of the collections, etc. Objects that are deemed unsuitable for retention as part of the core collection are identified and alternative homes in the public domain are sought where possible. The core collections basically fall into three categories, with different levels of access:

- Display material
- Study collections
- Long-term research material

Items not retained for the Core Collection are categorised as follows:

- Working or demonstration material
- Education, handling and loan collection
- Set dressing and cannibalization
- Dispersal
- Disposal.

The Curator informed the Committee that the stores at King's Lynn Museums contained a number of social history objects that were appropriate for deaccessioning and disposal, including objects that are duplicated in other museums, or are of poor quality and now require large conservation resources to be of display standard. Most of the objects have little or no provenance, and some have no known relevance to the local history of the area. As a result these fall outside the Acquisition Policy of the museums service today. A review of the collections had been undertaken. Following the agreed process the attached list of objects (Annex 2) had been identified for deaccessioning and subsequent dispersal or disposal. It was explained that while finding a new home for the objects in another museum will be the ideal first priority, it may be that because of the poor quality and lack of provenance of the objects, destruction of the objects may be the only realistic outcome of the rationalisation process. A budget of £1,000 may be required to pay for the removal firm's charges and possible destruction or rubbish disposal.

The risk implications/assessment of the collections was outlined.

In response to questions, the Curator explained that the donor was known of the two masts detailed at Annex 2, but it was, however, not known where the boat originated from.

**RESOLVED: Members agreed that the objects listed in Annex 2 are deaccessioned.**

## **5 REPORT OF THE BOROUGH COUNCIL**

The Tourism Manager presented a report that updated Members of the Committee on the operation of the tourism and heritage facilities operated by the Borough Council over the 2008 calendar year and in particular focused on developments since the most recent report of 6 October 2008.

The report also provided an update in connection with the King's Lynn Heritage and Cultural Asset Review.

The following points were highlighted as set out below:

- Visitor numbers – the total number of visitors to the Borough Council's Tourist Information Centre in King's Lynn and Hunstanton for the period January – December 2008 show a overall decrease of 0.5% compared with 2007.
- Downham Market TIC – it was noted that although the December figures were not yet available, figures showed around a 21% increase in enquiries over 2007.
- Tales of the Old Gaol House – visitor numbers for the period January – December 2008, were around 8550. This represented a 6.5% reduction on 2007, but was still substantially above previous years.
- South Gate and Red Mount Chapel – Detailed opening dates for both South Gate and Red Mount Chapel in 2009 will be established early in 2009. It is hoped that opening of both sites can be co-ordinated on the same days, however, the number of open days will be subject to confirming the level of commitment which can be made by the teams of volunteers for South Gate and Red Mount Chapel. It is proposed that a single joint ticket is offered at a flat rate of £1 per adult. There will be increased coverage for both venues in the 2009 Discover King's Lynn promotion.
- Discover King's Lynn – The new simplified Discover King's Lynn voucher scheme, introduced for 2008 had worked well and will be continued in 2009. The 2009 guide and set of discount vouchers will be available in February. Members were informed that although featuring in the guide itself, the Corn Exchange would not be participating in this year's voucher scheme.
- West Norfolk Advertising Campaign – The final level of direct brochure enquires for the 2008 campaign was over 42,500, an increase on 2007.
- 2009 West Norfolk Publications – Copies of the West Norfolk Holiday Guide 2009 and the new Downham Market Mini Guide were tabled. The West Norfolk Holiday Guide featured new imagery and improved paper/print quality. The changes had been introduced following a peer group analysis of 2008 brochures involving 16 other coastal authorities. It was reported that paid advertising remained at the same level of investment. Where To Go and What To Do in West Norfolk – distribution in February. Hunstanton Mini Guide – the guide will be updated with some design and content improvements made for the 2009 edition.

- King's Lynn Hanse Festival – The main festival will take place from 30 July – 2 August and will feature a visit by the 15<sup>th</sup> century replica sailing ship the Lisa Von Lubeck. The event was being co-ordinated by the Arts Development Officer. A promotional flyer for the event is currently being produced. Details of the event are also featured on the website [www.kingslynnhansefestival.com](http://www.kingslynnhansefestival.com). Councillor Tyler reported that he had information of concerts being performed as part of the Hanse Festival and undertook to forward details.

**RESOLVED: That the update be noted.**

### King's Lynn Heritage and Cultural Asset Buildings Review

The Tourism Manager reported that following consideration of the content and recommendations of the Stage 1 Options Analysis report, consideration was now being given to the potential processes of more detailed work and investigation of the recommended options.

A report to Cabinet at the Borough Council will shortly be produced to identify the proposed ways forward.

Town Hall Complex – discussions had taken place between representatives to consider the potential options for the Town Hall and how they linked to further requirements for the Archive, Museum, future library provision and needs of the Registrars office. It is proposed that a project team would be established to investigate and develop more detailed proposals for the Town Hall which built on the recommendations of the Stage 1 report.

Arts Centre Complex – recommendations will be made for more detailed development of the business case to support the development of options for the Arts Centre.

The costs for undertaking stage one of the Heritage and Cultural Asset Buildings review were met from existing Town Hall reserves. The financial implications of further work will be identified in the subsequent report to Cabinet at the Borough Council.

With regard to the West Norfolk Holiday Guide, Councillor Mrs Murphy enquired if there were any future plans to include local food suppliers in order to attract further advertising and suggested a lower rate be applied. In response, the Tourism Manager advised that the West Norfolk Tourism Forum had also considered this, taking the view that the most effective way to promote places to eat as well as food producers, farm shops, etc would be through a database driven website. Further thought was being given to the development of a sub-website dedicated to food and produce. The website could then be referred to in the main publication. New photography including images of local fish shops, farm shops, etc had been produced in 2008 to support this future production.

The Chairman thanked the Tourism Manager for his informative report.



**RESOLVED:** That the report be noted.

6 **ANY OTHER BUSINESS**

Signage for King's Lynn

Concern was expressed at the current standard of signage for King's Lynn. The Chairman informed Members that a meeting had been held with the County Highways Department to discuss this important matter.

The Tourism Manager reported that it was hoped the three entry signs into King's Lynn could shortly be replaced. It was suggested that the signs should read as follows:

Welcome to the Hanseatic Town of King's Lynn.

Reference was made to the current location of the signs, in particular the one at the Main Road from Hardwick. The sign was currently located behind a shrub. A further sign was placed over the railway bridge which was felt to be too late to inform visitors. The Chairman requested that Vice-Chairman of the Committee raise this very important issue further with Norfolk County Council.

The current signage from the railway station directing people to the town centre was thought to be of poor quality and therefore should be improved.

It was suggested that future signage should include reference to Sea Henge and King's Lynn becoming a University Town in the future.

It was noted that a Highways Officer would be present at a NORA meeting on 14 January and it was suggested that the above issues be raised at that meeting.

**RESOLVED:** (1) That the Vice-Chairman raise this very important issue further with Norfolk County Council.

(2) The signage issue be raised at the 14 January meeting.

7 **DATE OF NEXT MEETING**

Monday 2 March 2009 at 2.15 pm in the Council Chamber, Town Hall, King's Lynn.

The following dates have been agreed for 2009:

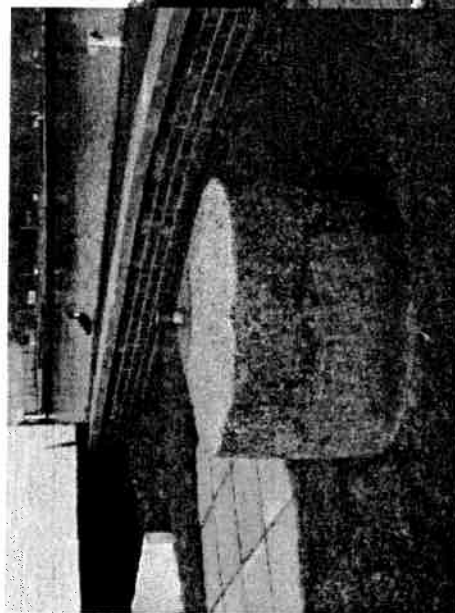
Monday 6 July 2009 at 2.15 pm in the Council Chamber, Town Hall, King's Lynn.

Monday 2 November 2009 at 2.15 pm in the Council Chamber, Town Hall,  
King's Lynn

**The Meeting closed at 4.08 pm**

# Annual Report on Archaeology and the Historic Environment

King's Lynn and West Norfolk Area Museums Committee  
5 January 2009



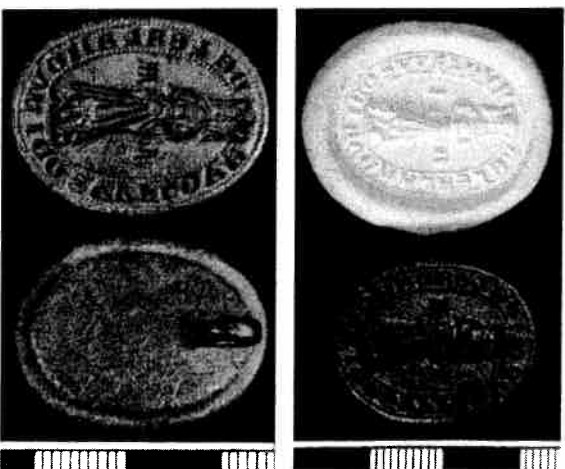
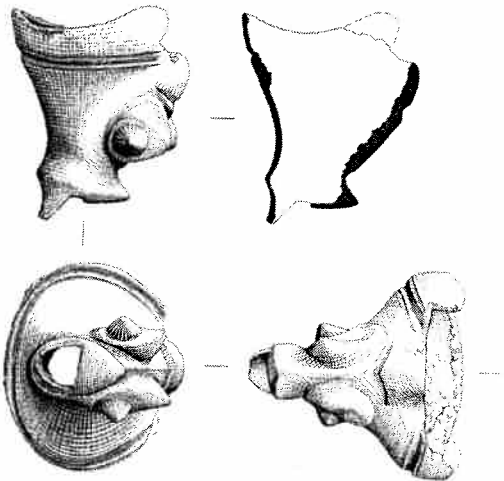
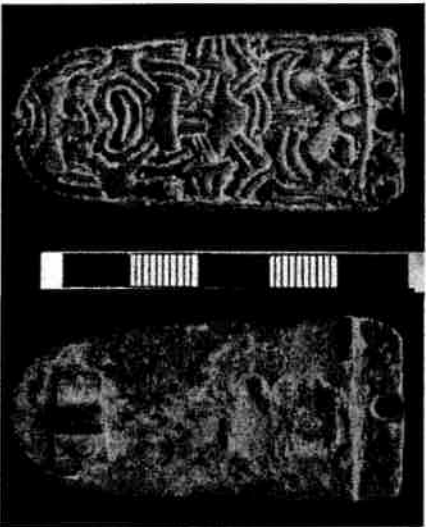
**David Gurney**

**Acting County Archaeologist**

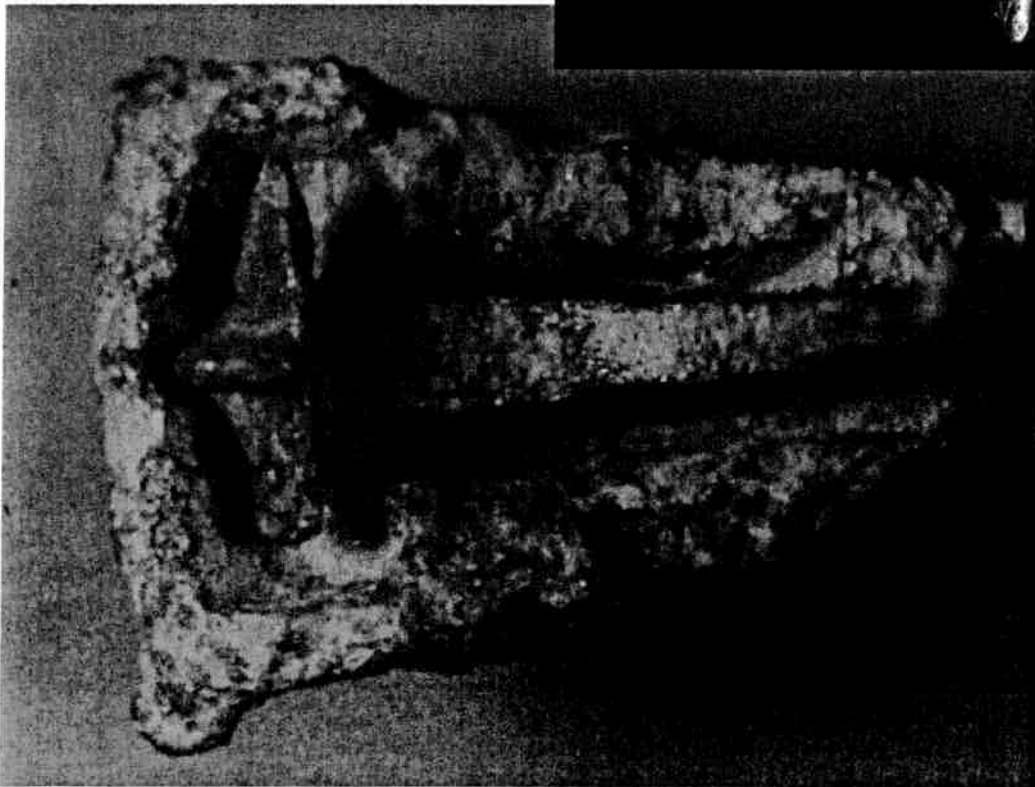
[www.museums.norfolk.gov.uk](http://www.museums.norfolk.gov.uk)

**na** NORFOLK Museums  
& Archaeology Service

# Identification & Recording Service for Archaeological Finds / Portable Antiquities Scheme



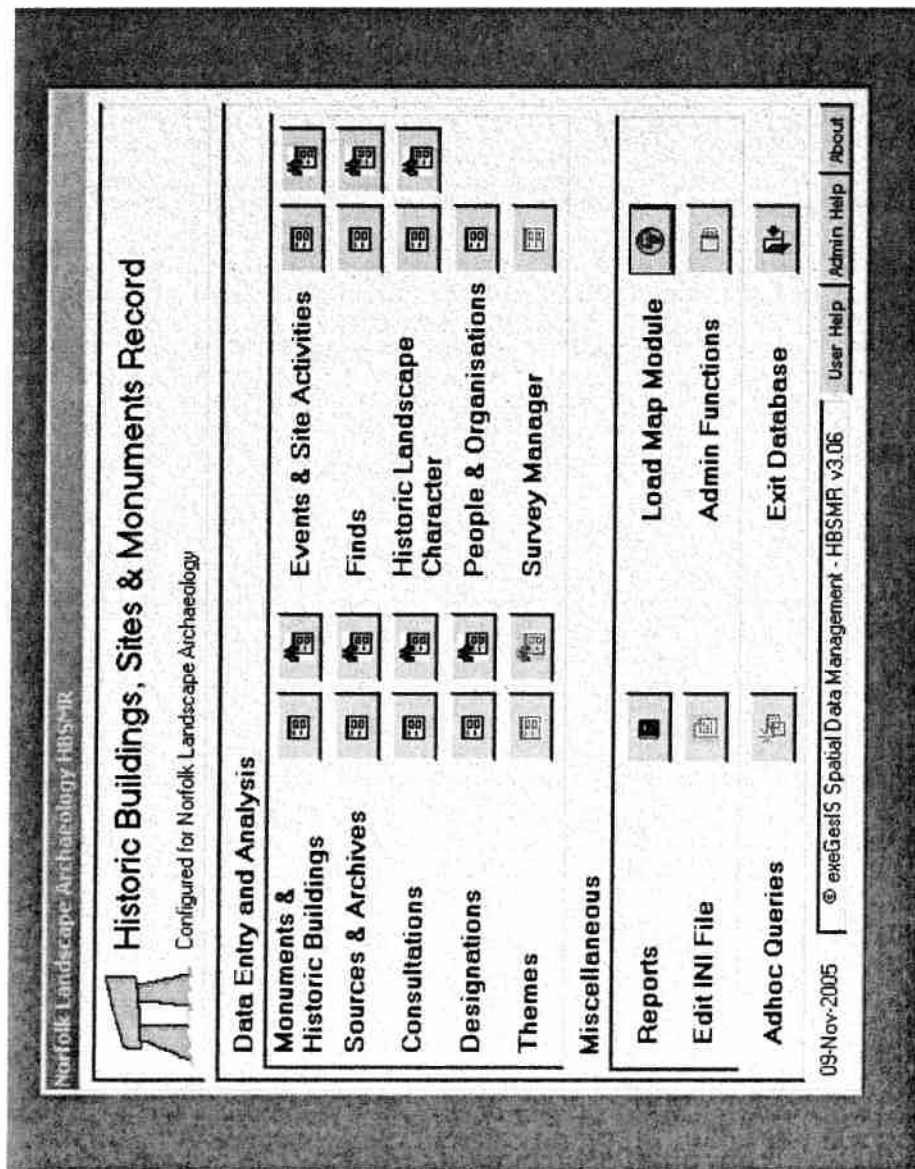
[www.museums.norfolk.gov.uk](http://www.museums.norfolk.gov.uk)



[www.museums.norfolk.gov.uk](http://www.museums.norfolk.gov.uk)



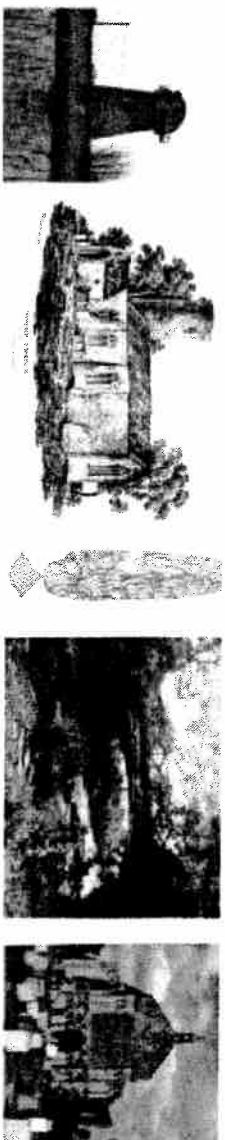
# The Norfolk Historic Environment Record



# Norfolk Heritage Explorer

## www.heritage.norfolk.gov.uk

**norfolk  
heritage  
explorer**



**Simple Search**  
**Advanced Search**  
**Map Search**

- Parishes
- Glossary
- Archaeology & Art
- Articles
- Biographies
- Crafty Ideas
- Great Yarmouth
- Heritage Trails

Welcome to the Norfolk Heritage Explorer website. This is the online version of the Norfolk Historic Environment Record (NHER) – a database of archaeological sites, finds and buildings in Norfolk.

You can search the database using a keyword, time period and/or location in the simple search form below.

You can also search using the NHER Number if you are looking for a specific record. To search by postcode, go to the [Map Search](#) page.

Enter one or more search criteria then click the Search button:

**Keyword(s):**

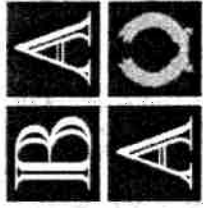
**Time period:**

**Parish:**

**NHER number:**

[www.museums.norfolk.gov.uk](http://www.museums.norfolk.gov.uk)





BRITISH ARCHAEOLOGICAL AWARDS 2008

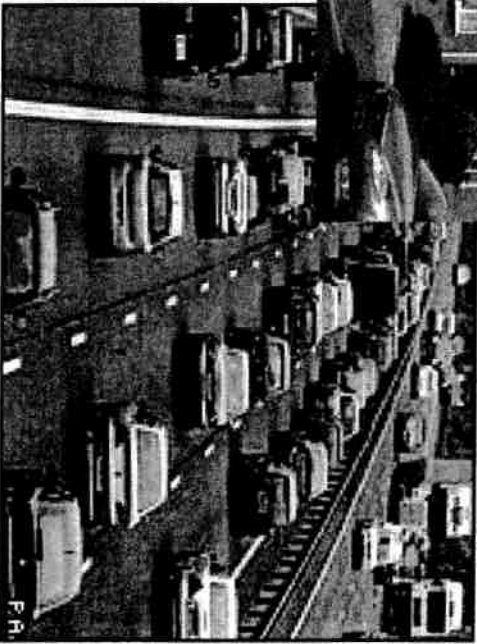
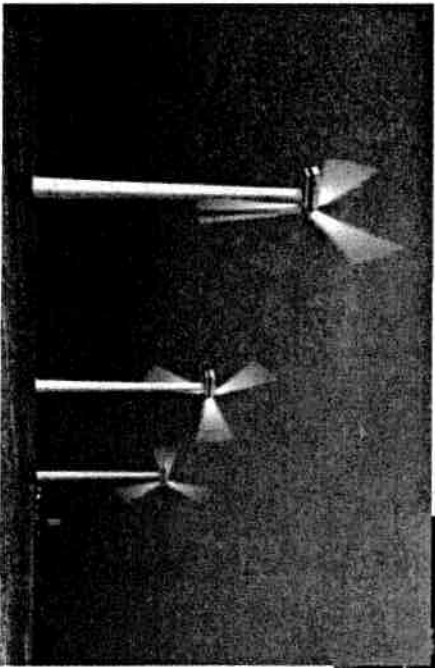
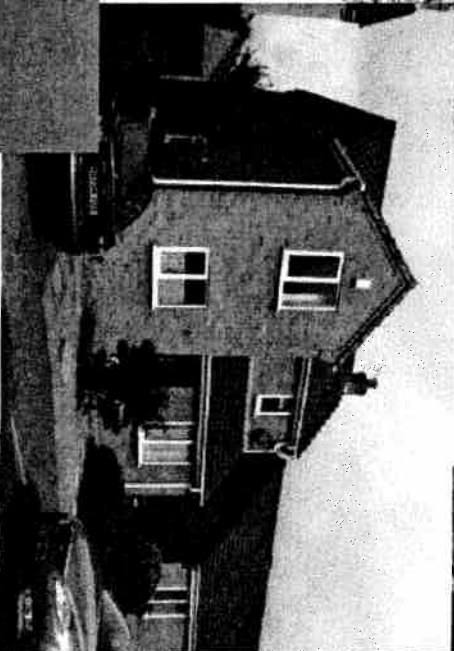
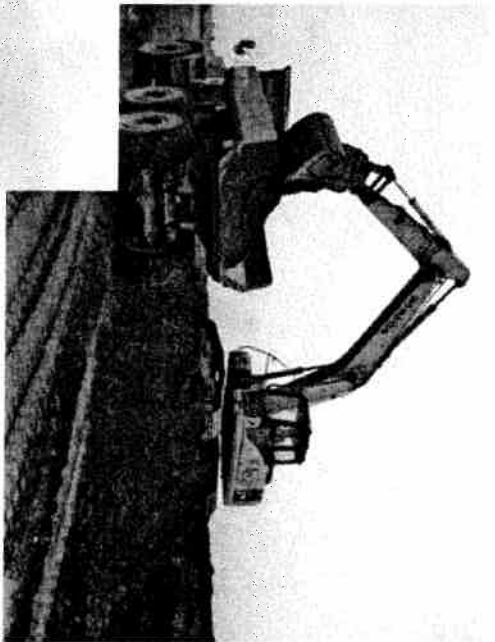
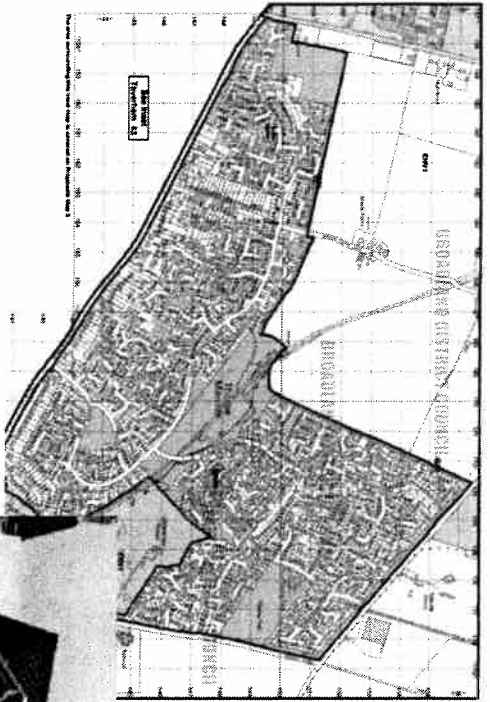
BEST ARCHAEOLOGICAL  
ICT PROJECT 2008

HIGHLY COMMENDED

The Norfolk Heritage Explorer  
Norfolk Museums & Archaeology Service

Honorary Secretary

Chairman



[www.museums.norfolk.gov.uk](http://www.museums.norfolk.gov.uk)

# Recent Excavations

- Barton Bendish
- Brancaster
- East Rudham
- East Winch
- King's Lynn
- Leziate
- Marham
- Southery
- West Dereham



# Environmental Stewardship

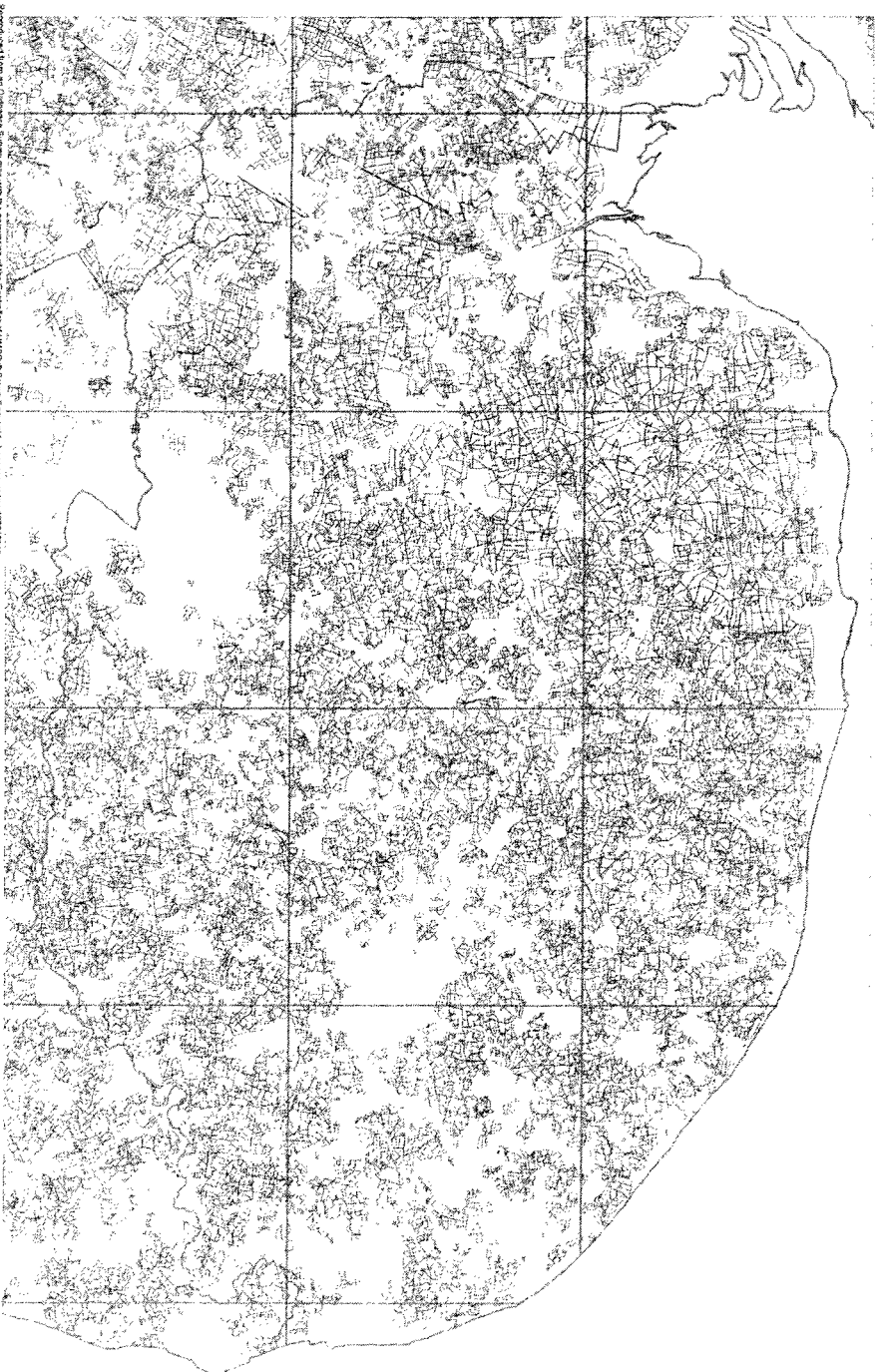
Areas in Environmental Stewardship (up to 1st August 2008)

ELS and HLS

Compiled by Norfolk Landscape Archaeology, using Natural England/DEFRA data on 22 September 2008

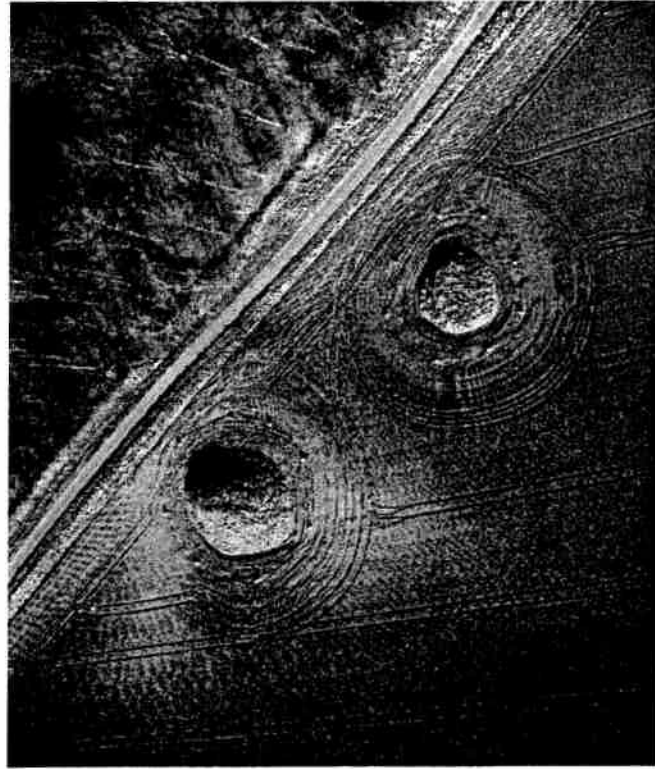
Scale 1:300000

Norfolk Landscape Archaeology  
Ordnance Survey  
East of Angles  
Norfolk  
NE20 7DP

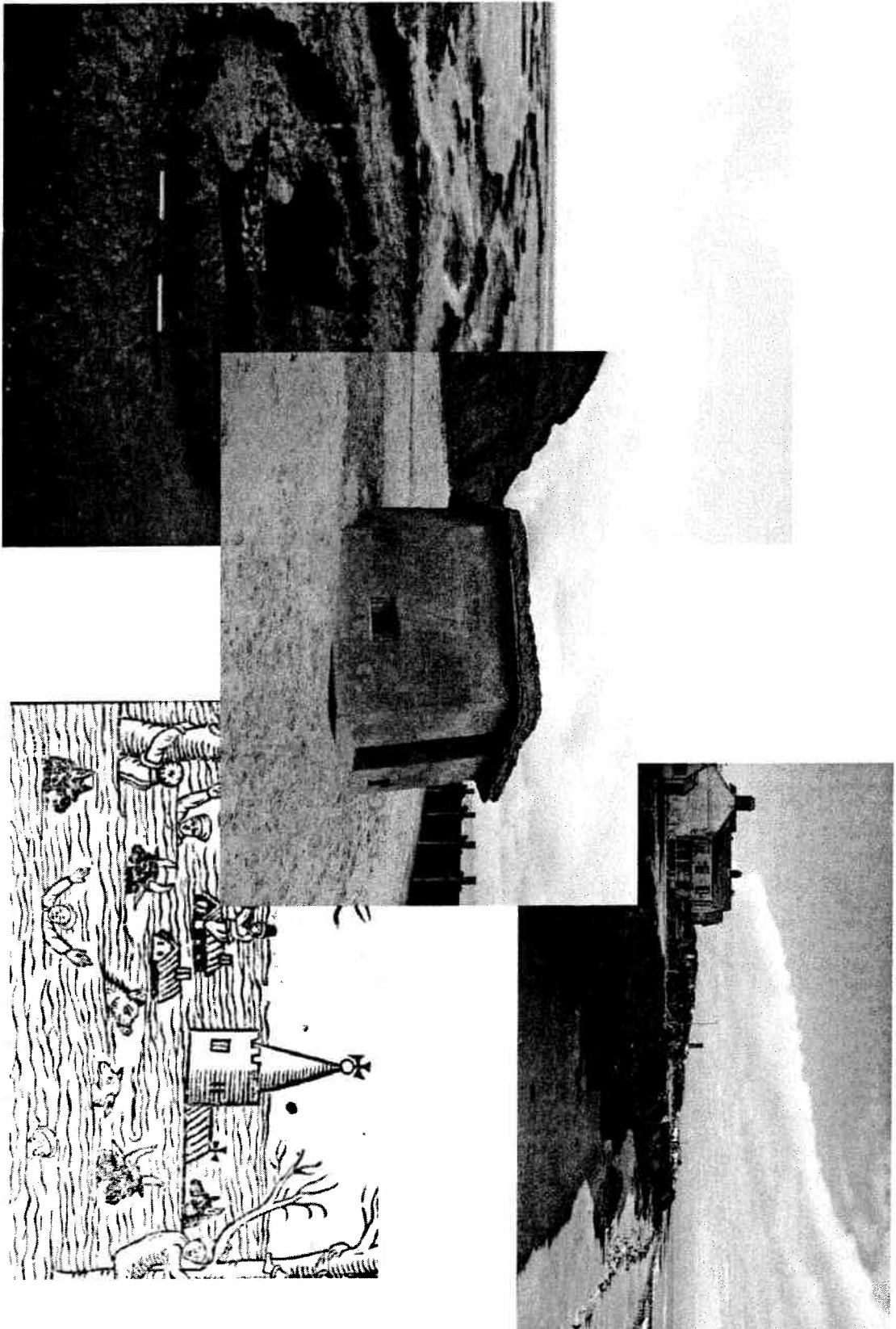


Downloaded from an Ordnance Survey map, with the permission of the Controller of HMSO & Crown Copyright. Licence number: 10001834

# Norfolk Monuments Management Project



[www.museums.norfolk.gov.uk](http://www.museums.norfolk.gov.uk)

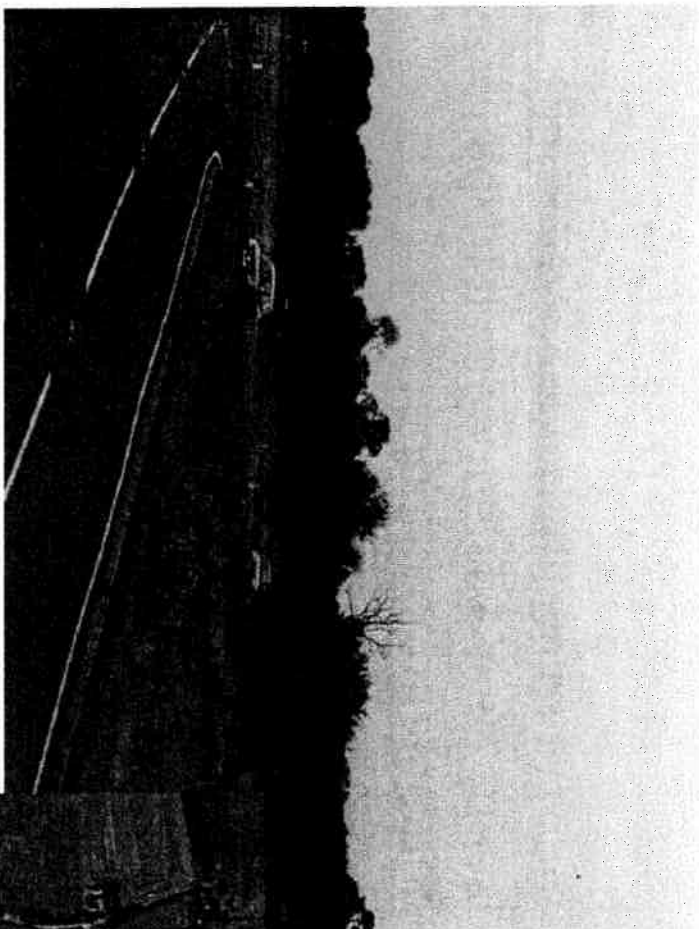


[www.museums.norfolk.gov.uk](http://www.museums.norfolk.gov.uk)

## Historic Landscape Characterisation

is a way of defining, mapping and recording the evidence of past human activity in the whole landscape as it exists *today*. It helps to identify landscape character and change.





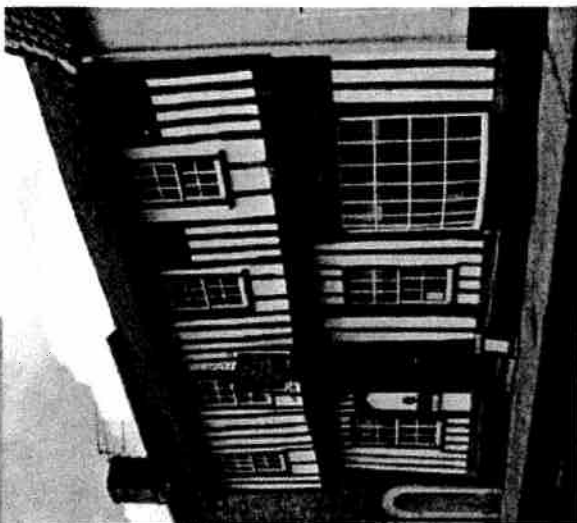
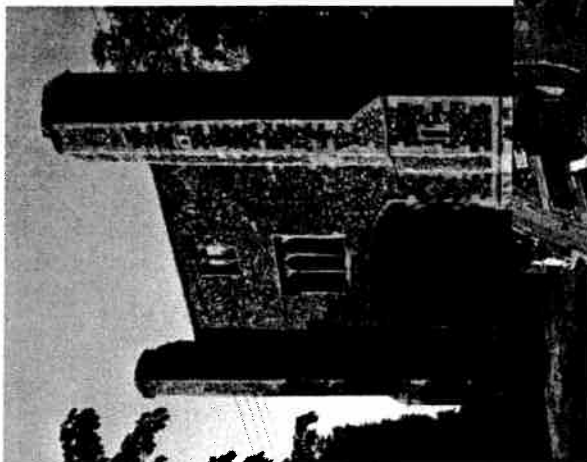
[www.museums.norfolk.gov.uk](http://www.museums.norfolk.gov.uk)



# Historic Environment Surveys

Norwich, Great Yarmouth, Thetford.

King's Lynn?

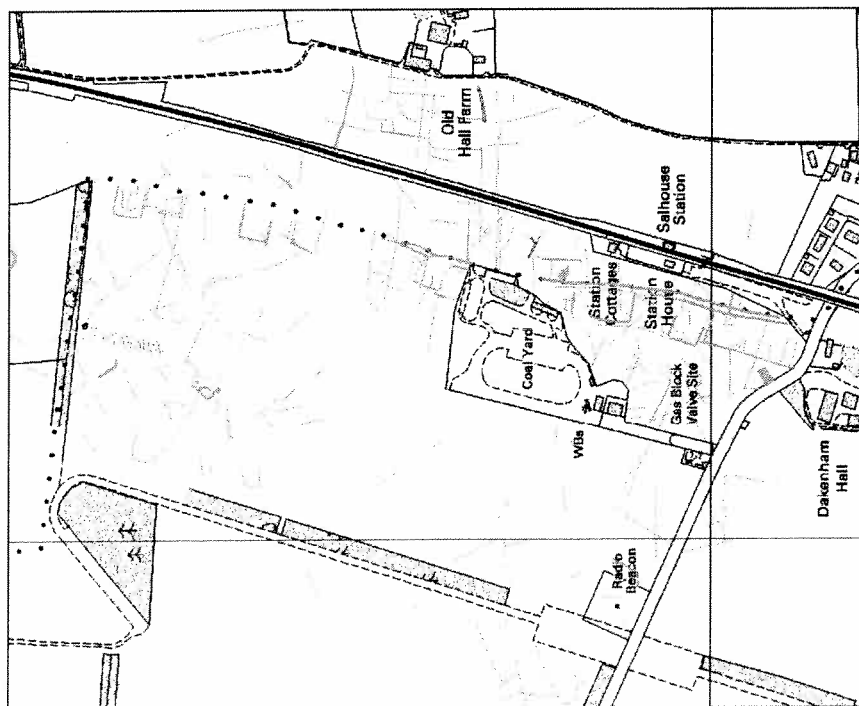


[www.museums.norfolk.gov.uk](http://www.museums.norfolk.gov.uk)

# **An Historic Environment Survey for King's Lynn?**

- A report on the historic environment of King's Lynn and its significance
- To characterise and assess the character and value of King's Lynn historic environment
- Contributes to strategic planning
- Development of a series of maps of historic character zones covering the urban area
- Enhanced engagement with the local community
- Development of an outreach programme to accompany the project
- Increased access to data through outreach and the Norfolk Heritage Explorer website
- Growth Point Funding?
- English Heritage contribution?

# National Mapping Programme



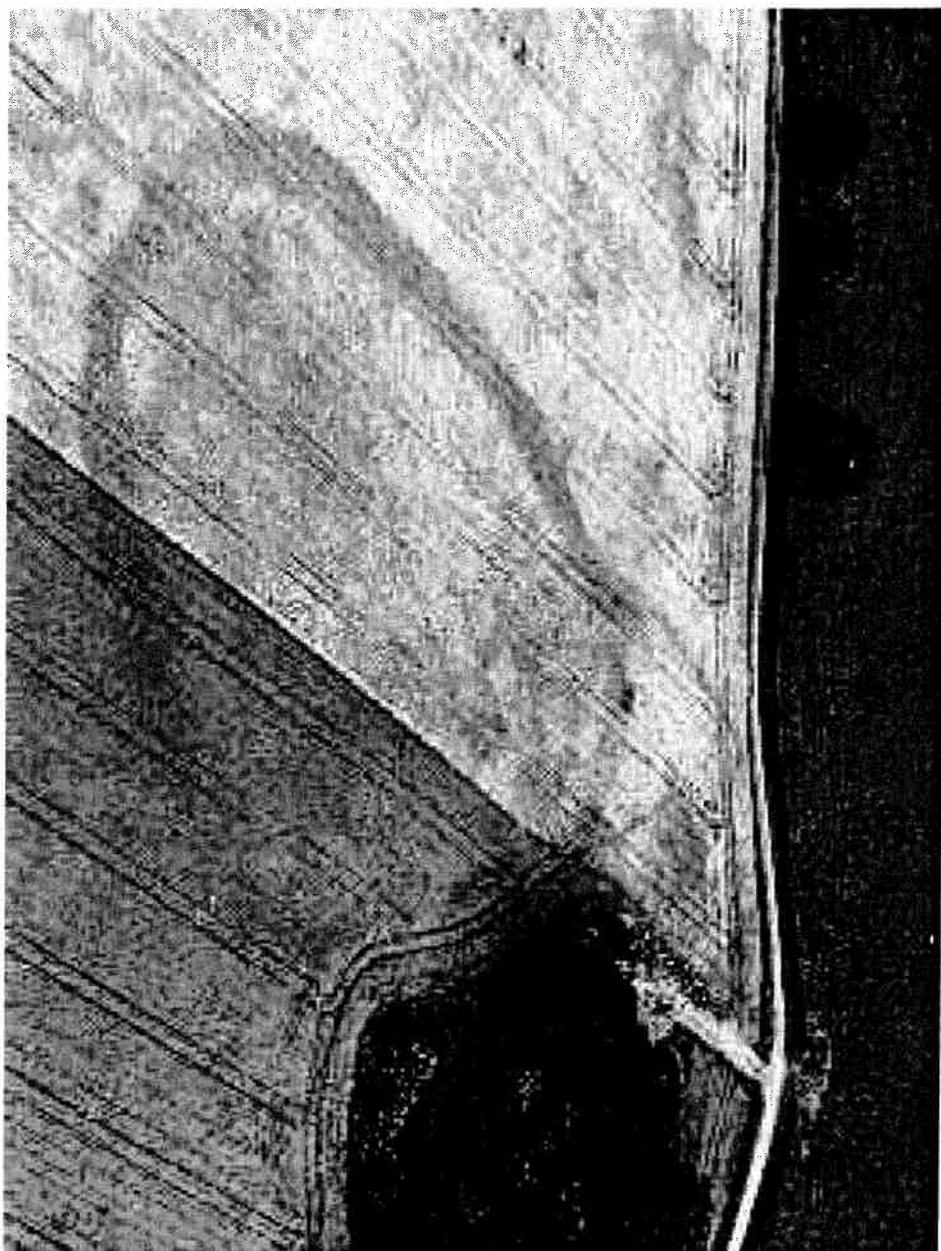
0 400m

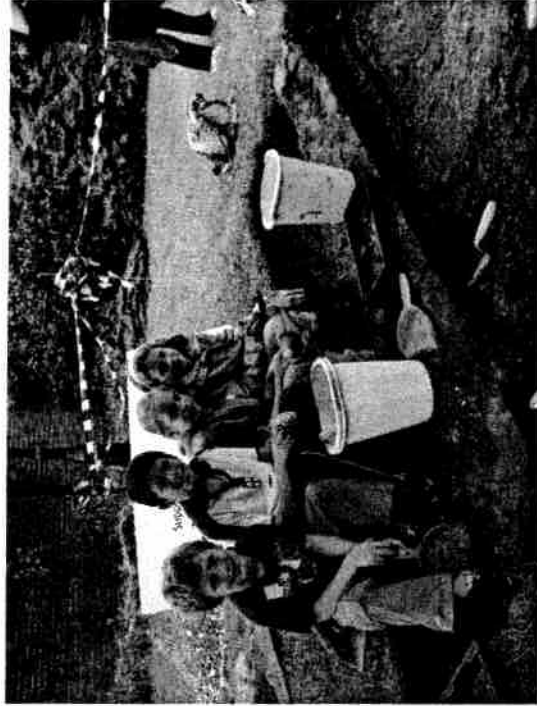
Base map reproduced from an Ordnance Survey map with the permission of the Controller of HMSO © Crown Copyright. Licence number 100019340.

Bank

Ditch

[www.museums.norfolk.gov.uk](http://www.museums.norfolk.gov.uk)





# Any Questions?

