

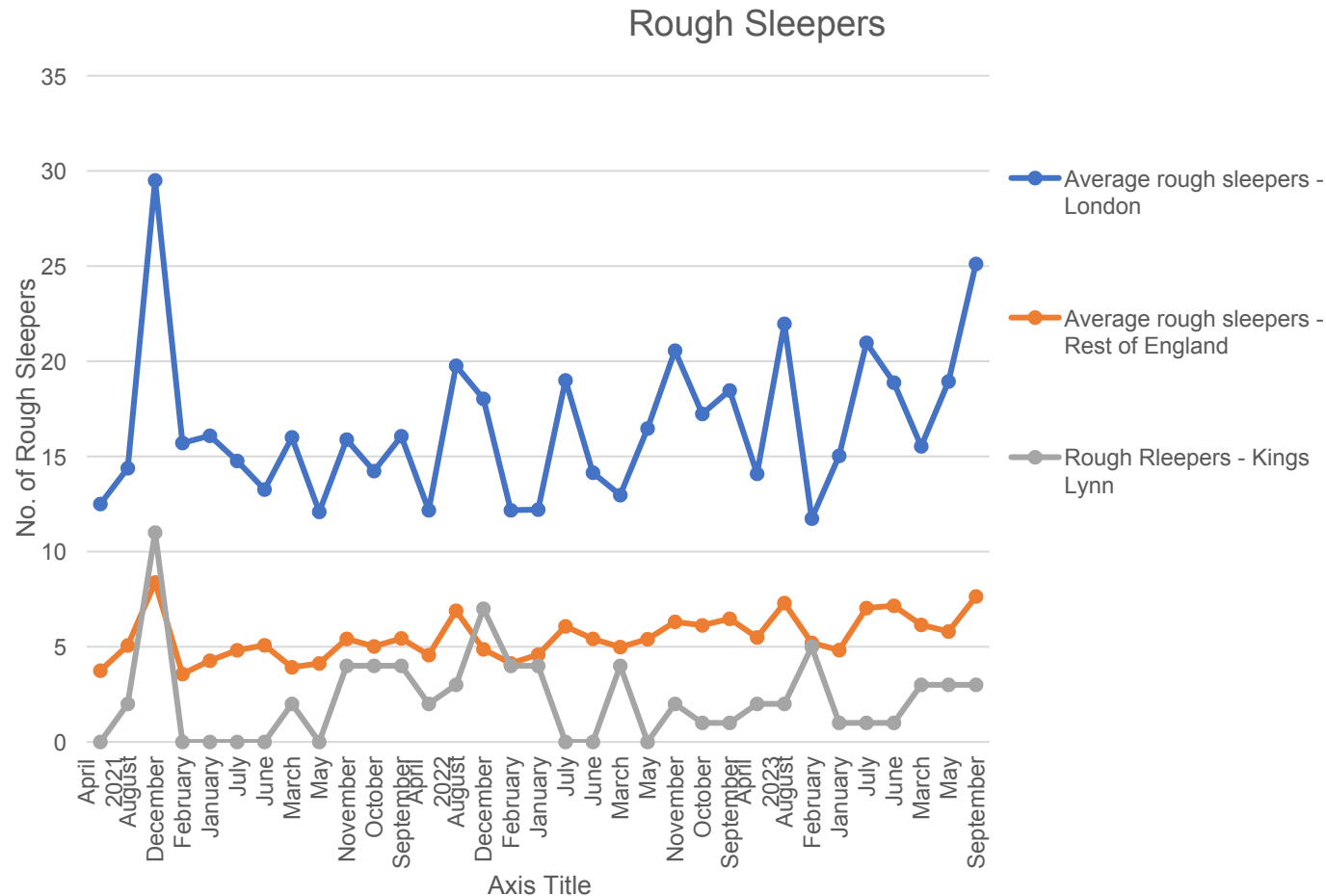
Homelessness update

February 2024

Borough Council of
**King's Lynn &
West Norfolk**



Number of people sleeping rough



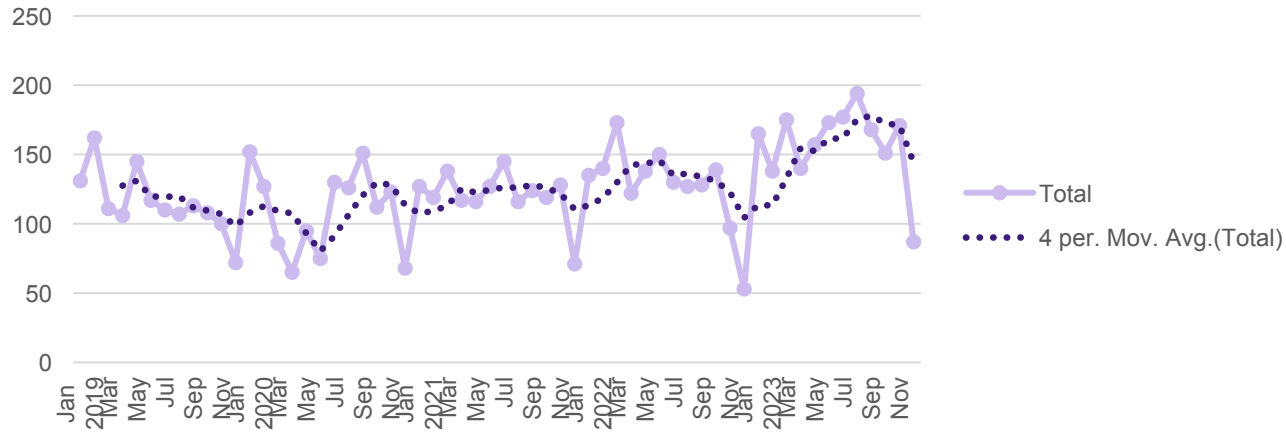
This shows the number of people reported to be sleeping rough in a month for King's Lynn and West Norfolk, nationally (excl. London) and London boroughs.

The number of reported rough sleepers throughout the month has continued to remain comparatively low, despite an increase in support needs and pressures around move on accommodation.

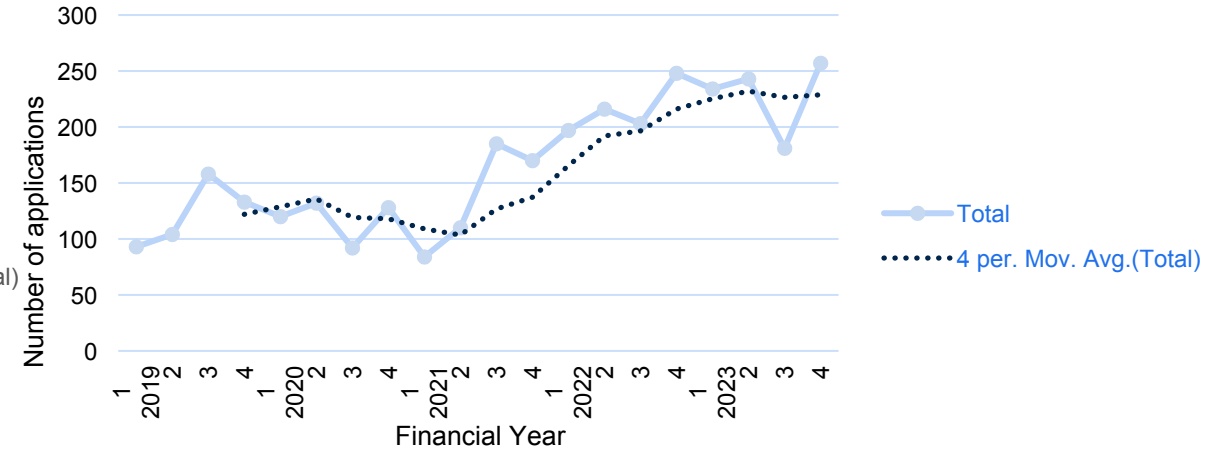


Number of approaches for assistance

Number of new or change of circumstances submitted for review for social housing



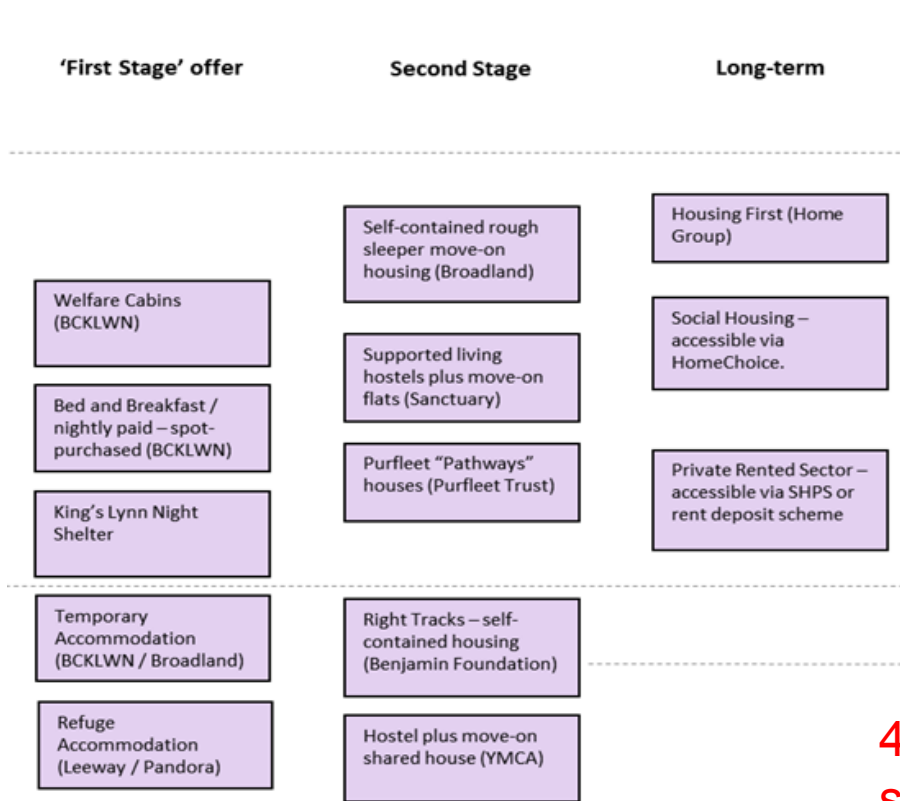
Total number of Homeless applications taken



This shows the number of people approaching for access to social housing either by **completing a new application**, or updating their application following a **change of circumstances**

This shows the number of initial approaches for housing advice approaches which demonstrated a **reason to believe they were homeless or threatened with homelessness within 56 days** and a **formal Homeless application** was taken

Accommodation options

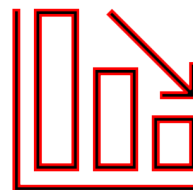


This is the accommodation pathway for customers who approach as Homeless, or who are working with the local authority to attempt to prevent their homelessness.

There is a **significant delay in accessing long-term accommodation**, which is causing households to remain in the first and second stage of accommodation for longer periods of time.

- **Housing First** – lack of available properties
- **Social housing** - lack of properties made available by housing associations; increased need in the borough
- **Private rented** - increased difficulty in accessing due to affordability and lack of supply

41% Decrease in available social housing (2021 – 2023 properties advertised)



325% Increase in households with a Full Housing Duty owed awaiting social housing (LAHS return 2020 -2021 Vs 2022-2023)

