

CIL DRAFT Governance and Spending_2023

Draft CIL Governance Document 2023

Contents

Region

1	Introduction	1
1.1	Statutory Requirements	2
1.2	What can CIL be spent on	2
2	Governance Arrangements	4
3	Applying for CIL funds	6
3.1	Application Essential Requirements	8
3.2	Consultation Requirements	9
4	Infrastructure Project Funding Allocation - over £30,001	10
4.1	The Decision Making Process for Infrastructure Projects over £30k	11
5	Infrastructure Project Funding Allocation between £2,000 and £30,000	13
5.1	The Decision Making Process for Infrastructure Projects between £2,000 and £30,000	14
6	Once the funding decisions have been made	16
6.1	Monitoring and Review	17
7	Appendix 1 - CIL Annual List of Infrastructure Projects	19
8	Appendix 2 - CIL Governance Framework	20
9	Appendix 3 - Infrastructure Projects Application Scoring Criteria	22

CIL DRAFT Governance and Spending_2023

1 Introduction

1.0.1 The Borough Council of King's Lynn and West Norfolk approved the introduction of the Community Infrastructure Levy (CIL) in December 2016 and started charging on 15 February 2017.

1.0.2 CIL is paid to the Borough Council by developers after their planning permissions are implemented.

1.0.3 CIL is governed by the CIL Regulations 2010 (amended). In the Borough of King's Lynn and West Norfolk, CIL is charged on all residential and retail developments, which add one or more new dwelling(s) or more than 100sqm of floor space.

1.0.4 CIL is charged at a rate per square metre and varies according to land use.

1.0.5 CIL is just one funding stream that can be used, in conjunction with others, to fund infrastructure projects. Alongside CIL, S106 obligations will still exist, but generally as one-off agreements to mitigate the impacts of larger developments and to secure on-site developer requirements, such as the provision of affordable housing. Examples of how infrastructure projects can be funded can be seen in Figure 1.

Figure 1 - Funding Streams



1.0.6 This document details the governance arrangements in place at the Borough Council of King's Lynn and West Norfolk, for the allocation and spending of CIL.

1.0.7 The original parameters for the governance arrangements of CIL were agreed at Cabinet on 17 August 2020.

1.0.8 The governance arrangements will be reviewed on an annual basis, to meet the Corporate Objectives and Priorities, by Cabinet.

CIL DRAFT Governance and Spending_2023

1.0.9 This document is based on the 7 'Appendix 1 - CIL Annual List of Infrastructure Projects' and is applicable for the financial year 2023/2024

1.0.10 The spending priorities (as aligned to the Corporate Business Plan) will be reviewed on an annual basis.

1.1 Statutory Requirements

1.1.1 Under CIL, the Borough Council will act as the designated Charging Authority.

1.1.2 As a Charging Authority the Council has an obligation to:

- Prepare and publish the CIL Charging Schedule
- Determine CIL spend, ensuring it is used to fund the provision, improvement, replacement, operation or maintenance of infrastructure to support development of its area
- Report on the amount of CIL revenue collected, spent and retained each year.

1.1.3 The Council are required under [The Community Infrastructure Levy \(Amendment\) \(England\) \(No. 2\) Regulations 2019](#), to produce a statement of the infrastructure projects or types of infrastructure which the Council intends will be, or may be, wholly or partly funded by CIL.

1.1.4 This is referred to as the Community Infrastructure Levy List of Infrastructure Projects and replaces the Regulation 123 list (R123 list).

1.1.5 CIL money collected may only be allocated to and spent on these types of infrastructure.

1.1.6 The Borough Council's Annual List of Infrastructure Projects and Annual Infrastructure Funding Statement detailing CIL receipts, balances and expenditure for each financial year can be found on the Council's CIL webpages at https://www.west-norfolk.gov.uk/homepage/276/cil_financial_reports.

1.2 What can CIL be spent on

1.2.1 CIL Regulations set the context for the spending of CIL funds on infrastructure. The regulations encourage the accumulation of CIL funds into a 'pot'.

1.2.2 Unlike other obligations or charges, CIL spending does not need to be directly related to the donor development and can address infrastructure needs in general across the Borough Council's administrative area.

1.2.3 The key points set out by the CIL Regulations and Guidance relating to CIL funding are:

CIL DRAFT Governance and Spending_2023

- **CIL should be spent on infrastructure including: roads and other transport, schools and other education, community facilities, health, sport / recreation and open spaces**
- **The infrastructure funded must support the development of the area**
- **CIL can be used to increase the capacity of existing infrastructure or to repair failing infrastructure, if needed to support development**
- CIL and Section 106 should not be secured to fund the same infrastructure project e.g. Social/Affordable Housing

1.2.4 As per the CIL Regulations and Guidance, CIL is proportioned and allocated using the following approach:

- 5% is retained by the Borough Council of King's Lynn and West Norfolk to cover administrative costs (including consultation on the levy charging schedule, enforcing CIL, legal costs and reporting on CIL activity)
- 15%, known as the Neighbourhood Allocation, is established for spending within the neighbourhood of contributing development (up to a maximum of £100 per existing Council Tax dwelling). This allocation can either be transferred to the relevant Parish Council or retained by the Borough Council to be spent on neighbourhood projects where the development is not in a Parish. This allocation rises to 25% when a Parish has a Neighbourhood Plan in place.
- 80%, known as the CIL Infrastructure Fund, is retained by the Borough Council, to allocate to projects in accordance with the Council's Infrastructure List, which is reviewed annually, and in line with the agreed CIL Governance arrangements.

For example:

If £1,000 is received it would be distributed as follows:

- Where 1% = £10
- 5% Admin = £50
- 15% (without Neighbourhood Plan) = £150 **or** 25% (with Neighbourhood Plan) Parish Payment = £250
- the remaining sum is placed in the CIL Infrastructure fund 80% = £800 or 70% (with Neighbourhood Plan) = £700

It is very unlikely that CIL will generate enough funds to completely cover the cost of new infrastructure needed to fully support planned development. As such, there will be competing demands for this funding. With this in mind, it is important to ensure that there are robust, accountable and democratic structures in place to ensure the spending of CIL funds are prioritised in the right way.

1.2.5 The sections that follow set out the Governance Arrangements and approach for how decisions are made on the prioritisation and spend of the CIL Infrastructure Fund.

CIL DRAFT Governance and Spending_2023

2 Governance Arrangements

2.0.1 The CIL Infrastructure Fund has been separated into 2 specific project types, to enable the funding to meet wider borough infrastructure requirements and also to support local community needs.

2.0.2 The estimated annual income of CIL is 1 million pounds which would be split as follows;

Infrastructure Projects over £30,001

- These are projects which require the most amount of CIL funding
- The Infrastructure Projects will be in excess of £30,001 and be fully match funded
- Longer term projects

Infrastructure Projects up to £30,000

- These are projects which will meet the needs of Parishes and Wards, to fund smaller local projects between £2,000 and £30,000
- It is expected that there will be an element of match funding for these projects.
- Short to Mid term projects which must be completed within 5 years.

2.0.3 In order to aid the organisation, checking and decision making, the Borough Council has set up a CIL Spending Panel.

CIL Spending Panel

2.0.4 The CIL Spending Panel is formed from elected Councillors and assisted by Officers and reports to the BCKLWN Management Team and Cabinet.

2.0.5 The CIL Spending Panel:

- reviews the funding applications received
- makes recommendations for suitable project spending
- monitors project spend and progress.

The Spending Panel have the ability to transfer funds within the project groups, **up to a maximum of 10% of the available CIL Funding available.**

Criteria for Funding Selection

2.0.6 The Spending Panel will review each application and base their decision on the following:

CIL DRAFT Governance and Spending_2023

2.0.7 Project Scoring

- filter the projects based on BC Officers' scoring
- prioritise the projects with the highest scoring;

2.0.8 When there are more project applications, than CIL Funding available, the Spending Panel will take into consideration:

- the amount of development in the relevant area, based on planning application history, to identify need for infrastructure
- the amount of CIL Funding already received relating to the area and/or project, to allow funding to be allocated to areas with less funding

2.0.9 CIL Fund Transfers

2.0.10 Each project group is allocated a percentage of the CIL Income, as identified within this Governance document.

2.0.11 There may be occasions when funding applications exceed the amount of funding available. An over subscription may relate to only 1 project group or to all project groups.

2.0.12 The Spending Panel will review the funding needs, taking into account the funding allocated to all project groups.

2.0.13 When there is not enough CIL funding within a project group to meet the application submissions, the Spending Panel may agree to transfer funding of up to 10% from a different project group with less need, based on the considerations listed above.

2.0.14 The Panels role in the Governance Framework, is shown in Appendix 2 - 8 'Appendix 2 - CIL Governance Framework'

2.0.15 The current list of eligible spending is detailed in sections 4 and 5. These may change in subsequent years.

2.0.16 Cabinet will review and decide on amended priorities, as appropriate, on an annual basis.

CIL DRAFT Governance and Spending_2023

3 Applying for CIL funds

3.0.1 Annually, the Borough Council will publicise the amount of CIL funding collected.

3.0.2 The Council will encourage the submission of Expression of Interest Forms, requesting CIL funding.

3.0.3 Key internal and external stakeholders responsible for delivering the infrastructure identified in the Council's Infrastructure List will receive direct notification of the opportunity to request CIL funding.

3.0.4 The stakeholders automatically notified will be:

- Internal Departments within BCKLWN
- Norfolk County Council
- Parish and Town Councils within the Borough
- All BCKLWN Councillors

3.0.5 Information about the opportunity will also be available on the Council's website.

3.0.6 The allocation of these funds will be made through an 'Expression of Interest' process.

3.0.7 A diagrammatic summary of the governance framework for CIL is set out in Appendix 1, which shows the spending and reporting arrangements that are in place.

3.0.8 Expression of Interests will be made on a standard online template, issued by the Borough Council.

3.0.9 **The application form will request key information about the project, including:**

1. Description and details of the project
2. Purpose of the project and its benefit to the community
3. Financial details:
Expected expenditure which must include:
 - a. summary of proposed costs
 - b. details of quotes, to demonstrate that the funding request has been researched
 - c. Amount of CIL funding requested - £
 - d. Details of any match funding
4. Any other supporting information e.g. Project Report and Timescales.

CIL DRAFT Governance and Spending_2023

The Borough will set a timescale for the submission of applications, which will be published on our webpages.

The decision making process, as detailed in Appendix 2, will commence after the application deadline has ended, to:

- ensure that all projects are reviewed fairly and transparently
- give each project the same opportunity for funding

BCKLWN Linked Funding Applications

To ensure transparency, any application made on behalf of the BCKLWN or subsidiary organisation, will be passed to the Cabinet for scrutiny as part of the decision making process. This will apply to all funding applications from any project group.

CIL DRAFT Governance and Spending_2023

3.1 Application Essential Requirements

Bodies applying for funds, will need to demonstrate that they are properly constituted, and reflect appropriate national policies e.g. Equality, Safe Guarding and Discrimination.

3.1.1 It is expected that project sustainability has been considered, prior to applying for funding, to ensure the continued success of the project on completion.

3.1.2 **In order for a project to be considered for CIL funding, the following eligibility criteria needs to be met:**

- The Application Form has been completed satisfactorily
- The project must meet at least one of the criteria, as detailed in the Annual Infrastructure List.
- The organisation **must** have the legal right to carry out the proposed project
- The proposed project **will not provide a financial advantage, to benefit a commercial or private business.**
- The project is clearly **defined as 'Infrastructure'**, as per the CIL Regulations

Applications should not include a schedule of ongoing costs, to maintain the project, once it has been completed.

CIL DRAFT Governance and Spending_2023

3.2 Consultation Requirements

3.2.1 As part of the application process, it is essential to consult with local community groups.

3.2.2 Areas in the Borough with a Local Council (Town or Parish Council):

Applications **must** be made in liaison with the relevant Local Council, this is to ensure:

- that the project meets the communities needs,
- they are given the opportunity to offer their support to the project,
- may provide an opportunity of match funding from either the Parish Precept or CIL Parish payment, where appropriate.

3.2.3 Unparished areas within the Borough:

- **Where no Local Council is present**, it would be beneficial for applicants to liaise with the local community group, usually identified as 'Parish Meeting'.
- **Where there is no community group**, applicants are advised to seek support from their local elected member(s).

3.2.4 Applicants may also wish to liaise with local elected members.

3.2.5 Details of local councils and elected members can be found on the BCKLWN Democratic Services website.

CIL DRAFT Governance and Spending_2023

4 Infrastructure Project Funding Allocation - over £30,001

4.0.1 50% of the CIL Infrastructure Funds will be allocated to projects requesting funding of over £30,001

4.0.2 Projects over £30k will be selected, by in line with the CIL Governance arrangements, **with more weight given to areas with significant development taking place.**

4.0.3 Allocations for spending on infrastructure, will be made to projects in accordance with the Council's adopted CIL Infrastructure List.

4.0.4 The Infrastructure list will be reviewed annually and updated to reflect the changing needs within the Borough.

The current list of Infrastructure Projects eligible for funding over £30k, are:

18+ Adult Education Infrastructure Projects

- To support the development of skills for adults of all ages, which may include: volunteer run projects to allow people to gain new skills, knowledge and experience.

Green Infrastructure Projects

- Projects relating to open spaces, such as public parks and gardens, woodlands, fields, hedges, lakes, ponds, coastal habitats, as well as footpaths, cycleways or rivers.
- Public spaces used for recreation and education, habitats for wildlife and nature.
- Environmental services such as flood defence or absorption of air pollution.

Leisure Time Activities Infrastructure-

- Accessible projects, to support leisure time activities, which may include; health & well-being schemes to encourage physical activity and playstreet initiatives.
- Projects run by community/voluntary groups including Local Councils, to promote social inclusion.
- Active living projects; to increase walking, cycling and sustainable transport.

The Project selection criteria are in line with the Borough Councils Corporate Business Plan.

The Project Criteria meet the Corporate priorities and objectives:

4.0.5 Education : Improving social mobility and inclusion to work with partners to improve education attainment levels and the skills of local people.

CIL DRAFT Governance and Spending_2023

4.0.6 Green Infrastructure: Protecting and enhancing the environment including tackling climate change to work with partners and the community to improve our natural environment and creating and maintaining good quality places that make a positive difference to people's lives to maintain accessible, clean, pleasant and safe public places and communities

4.0.7 Leisure: Improve and develop the quality of local sport and leisure facilities.

Question 1

Do you want to apply for CIL Infrastructure Project Funding?

4.0.8 If you wish to apply for CIL Project Funding, please click on the link below and it will take you to the online form.

4.0.9 [CIL Online Application Forms](#)

4.1 The Decision Making Process for Infrastructure Projects over £30k

4.1.1 Once the Project Application Forms, requesting CIL funding, have been validated by a Council Officer, initial scoring of the projects will then take place.

4.1.2 The factors that these Projects will be assessed against include:

- the need for the project
- benefit of the project
- deliverability of the project
- amount of development in the area of the project
- proposed no of houses in the project area

4.1.3 Projects will be viewed favourably if they lever in other funds that wouldn't otherwise be available, particularly where those funds may not be available in future years.

4.1.4 Ideally, bids should include significant sums of match funding.

4.1.5 At this stage, the Council Officer will notify Cabinet Members with specific portfolio responsibilities and the Local Ward member(s) of proposed projects, giving an opportunity for comment.

4.1.6 The Application forms, Scoring Sheets and comments, will then be taken to the BCKLWN Management Team to review and make a formal recommendation.

4.1.7 The Management Team are required to:

CIL DRAFT Governance and Spending_2023

- reach a balanced judgement over which projects are selected
- make recommendations on which projects should receive CIL funding
- consider whether there could be links to other areas of corporate or partner spending e.g. spending on habitats (Natura 2000 sites) mitigation works.
- take recommendations to the BCKLWN Cabinet for approval

4.1.8 Recommendations from the BCKLWN Management Team, will then go forward to Cabinet.

4.1.9 If agreed by Cabinet, the application stakeholders will be informed and funds will be allocated.

4.1.10 CIL payments up to £1,000,000 will then be signed off by a senior Council Officer.

Draft CIL Governance Document 2023

CIL DRAFT Governance and Spending_2023

5 Infrastructure Project Funding Allocation between £2,000 and £30,000

5.0.1 50% of the CIL Funds will be allocated to Infrastructure Projects, requesting funds of a value between £2,000 and £30,000.

5.0.2 Projects up to £30k will be selected, by in line with the CIL Governance arrangements, **with more weight given to areas with significant match funding.**

5.0.3 Allocations for spending on infrastructure, will be made to projects in accordance with the Council's adopted CIL Infrastructure List.

5.0.4 The Infrastructure list will be reviewed annually and updated to reflect the changing needs within the Borough.

The current list of Infrastructure Projects eligible for funding up to £30k are:

Education - Local Initiatives

- To support voluntary/community projects

Health

- To support NHS & voluntary services
- Support & increase wellbeing services

Economic Development

- To benefit the local area/wider community

Community Facilities - This may include public buildings/recreation areas:

- To support voluntary/community groups
- Increase facility capacity/repair existing infrastructure

Green Infrastructure

- To reduce carbon emissions
- Support & protect biodiversity - wildlife friendly sites

Open Space and Leisure

- Installation & improvement of public play areas and equipment
- Improvement of open spaces
- Support voluntary/community leisure facilities

CIL DRAFT Governance and Spending_2023

These Projects:

- **must commence within 1 year of being allocated CIL**
- **and must be completed within 5 years.**

CIL will be paid on completion of the project.

These Projects are in line with the Borough Councils Corporate Business Plan.

The Project Criteria meet the Corporate priorities and objectives:

- **Education** - Improving social mobility and inclusion to work with partners to improve education attainment levels and the skills of local people.
- **Health** - Improving social mobility and inclusion by continuing to assist our residents to maximise their opportunities by accessing the support and services they are entitled to.
- **Economic Development** - Delivering growth in the economy and with local housing to promote the borough as a vibrant place in which to live, to do business and as a leading visitor and cultural destination.
- **Community Facilities** - Creating and maintaining good quality places that make a positive difference to people's lives to maintain accessible, clean, pleasant and safe public places and communities.
- **Green Infrastructure**- Helping to improve the health and well being of our communities by supporting our local communities to be healthy and more active
- **Open Space and Leisure** - Creating and maintaining good quality places that make a positive difference to people's lives to maintain accessible, clean, pleasant and safe public places and communities and help to improve the health and well being of our communities

Question

Do you want to apply for CIL Infrastructure Project Funding?

If you wish to apply for the CIL Project Funding , please click on the link below and it will take you to the online form.

[CIL Online Application Form](#)

5.1 The Decision Making Process for Infrastructure Projects between £2,000 and £30,000

5.1.1 Once the Infrastructure Project Application Forms, requesting CIL funding, have been validated by a Council Officer, initial scoring of the projects will then take place.

5.1.2 The factors that projects will be assessed against include:

CIL DRAFT Governance and Spending_2023

- details of expenditure, how the money will be spent
- evidence of Local Council, Community meeting and elected member(s) support
- evidence to demonstrate community need and support
- evidence to demonstrate a commitment (financial or otherwise) to the project including details of match funding
- project timescales

5.1.3 Short term projects will be looked upon favourably, especially if the CIL can be allocated and spent within the same financial year.

5.1.4 A Council Officer undertaking the initial scoring of the project will make a recommendation, based on the scoring criteria.

5.1.5 At this stage, the Council Officer will produce a list of all projects received, which will be published as an agenda item, for the CIL Spending Review Meeting.

5.1.6 All Councillors, including Portfolio Holders, will be notified of when the CIL Spending Review Meeting will take place.

5.1.7 Any elected member may attend the CIL Spending Review meeting under Standing Order 34.

5.1.8 The recommendations will be reviewed, by the CIL Spending Panel.

5.1.9 The CIL Spending Panel is required to:

- reach a balanced judgement over which projects to select
- agree on which projects will receive CIL funding

5.1.10 CIL payments up to £30,000 will then be signed off by a Senior Council Manager.

CIL DRAFT Governance and Spending_2023

6 Once the funding decisions have been made

6.0.1 Once funding decisions have been made, in line with the CIL Governance process, all applicants will be notified of the outcome.

6.0.2 Successful applications will be sent, via email, a Funding Offer Letter and formal legal agreement, **which must be signed and returned.**

6.0.3 To enable funding to be formally allocated to the project, a signed agreement must be returned **and formally acknowledged by the Borough Council.**

6.0.4 Where an agreement has not been returned, the funding offer will be withdrawn and the sum reallocated as part of the next round of applications.

6.0.5 Successful applicants of CIL funding will be expected to maintain communication with the Borough Council, on the progress of their project, after a decision has been made to provide funding.

6.0.6 Where funding has been allocated 'in principle' or where staged payments are agreed, the scheme applicant will be expected to provide information to justify funding being transferred. The evidence of completion must include:

- **Original Invoices** - to demonstrate expenditure
- **Photographs of completed project** - to demonstrate completion and also for publicity purposes
- In some cases, to enable the project to progress, planning permission may be required. If this is the case, other relevant evidence may include:
 - Written Statement of completion
 - Planning Approval/Building Control Completion Notices - to demonstrate adherence to statutory obligations

6.0.7 Applicants should continue to provide information, until the scheme has been completed and all CIL funding has been spent.

6.0.8 At a minimum, an annual report will need to provide information on the progress of each scheme that funding has been allocated to.

6.0.9 A requirement to submit this information forms part of the agreement that the successful applicant is required to sign between themselves and the Borough Council of King's Lynn and West Norfolk.

CIL DRAFT Governance and Spending_2023

6.0.10 If an applicant does not spend CIL money within five years of receipt, or does not spend it as agreed then the Borough Council may require the applicant to repay some or all of those funds.

6.1 Monitoring and Review

6.1.1 The Borough Council of King's Lynn and West Norfolk is committed to ensuring the use of CIL is open and transparent.

List of CIL Funded Projects

The Borough Council will publish a list of all projects that have been allocated CIL funding on our website.

Annual Infrastructure Funding Statement

In line with the CIL Regulations, as amended in September 2019, the Borough Council will publish an Annual Infrastructure Funding Statement.

This report will provide details of CIL and also S106:

- receipts
- balances
- expenditure
- allocations.
- will be published on our website annually, for each financial year, no later than 31 December.

6.1.2 The published reports can be found on the CIL Financial Reports webpages at: https://www.west-norfolk.gov.uk/homepage/276/cil_financial_reports

Annual List of Infrastructure Projects

6.1.3 The Council are required under [The Community Infrastructure Levy \(Amendment\) \(England\) \(No. 2\) Regulations 2019](#), to produce a statement of the infrastructure projects or types of infrastructure which the Council intends will be, or may be, wholly or partly funded by CIL.

6.1.4 This is referred to as the Community Infrastructure Levy 7 'Appendix 1 - CIL Annual List of Infrastructure Projects' and replaces the Regulation 123 list (R123 list).

6.1.5 CIL money collected can only be allocated to and spent on these types of infrastructure.

CIL DRAFT Governance and Spending_2023

The CIL Spending Panel

6.1.6 The CIL Spending Panel will:

- review the uptake of projects within the project categories, after each application deadline has been met
- monitor the operation and implementation of CIL funding
- review the List of Infrastructure Projects, on an annual basis
- recommend amendments to the project selection criteria
- produce a Draft List of Infrastructure Projects

6.1.7 Recommendations from the CIL Spending Panel, will then go forward to Regeneration and Development (R&D) Panel.

The Regeneration and Development (R&D) Panel

The R&D Panel is made up of Elected Members, supported by Borough Council Officers.

6.1.8 The R&D Panel will:

- review the Draft List of Infrastructure Projects
- reach a balanced judgement on the project criteria, taking into consideration Corporate Priorities
- make recommendations to Cabinet

Cabinet

6.1.9 Cabinet will:

- review the recommendations
- approve the Annual List of Infrastructure Projects,

6.1.10 The Annual List of Infrastructure Projects will be published on the [CIL Governance and Funding webpages](#).

6.1.11 If you have any questions about this guidance, or CIL generally, please contact the Borough Council's CIL Monitoring and Compliance Officer at CIL@west-norfolk.gov.uk.

CIL DRAFT Governance and Spending_2023

7 Appendix 1 - CIL Annual List of Infrastructure Projects

7.0.1 The Council are required under [The Community Infrastructure Levy \(Amendment\) \(England\) \(No. 2\) Regulations 2019](#), to produce a statement of the infrastructure projects or types of infrastructure which the Council intends will be, or may be, wholly or partly funded by CIL.

7.0.2 This is referred to as the Community Infrastructure Levy List of Infrastructure Projects and replaces the Regulation 123 list (R123 list).

7.0.3 CIL money collected can only be allocated to and spent on these types of infrastructure.

Infrastructure Projects funding over £30,001

- 18+ Adult Education Infrastructure Projects
- Green Infrastructure Projects
- Leisure Time Activities Infrastructure-

Infrastructure Projects funding of £2,000 and up to £30,000

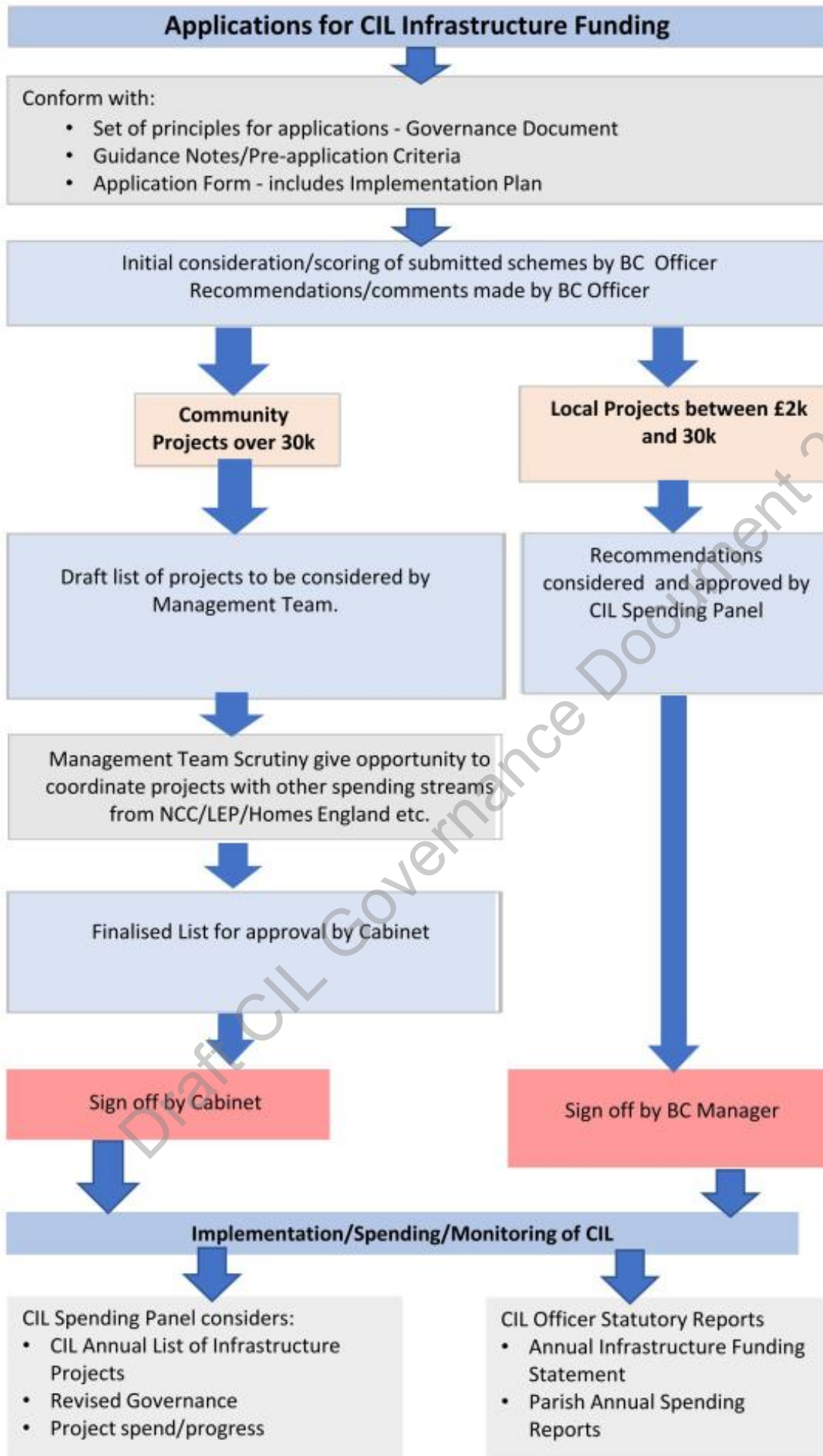
- Education – local initiatives
- Health
- Economic Development
- Community Facilities
- Green Infrastructure
- Open Space and Leisure

7.0.4 This list will be continually reviewed, to meet the changing needs and aspirations of the Borough to support future infrastructure.

CIL DRAFT Governance and Spending_2023

8 Appendix 2 - CIL Governance Framework

Draft CIL Governance Document 2023



CIL DRAFT Governance and Spending_2023

9 Appendix 3 - Infrastructure Projects Application Scoring Criteria

Infrastructure Project Application Form

To view and submit the CIL Funding Application, please use the online form at: https://west-norfolk.objective.co.uk/portal/cil_folder/cilappsfy/

Scoring Criteria

Any Infrastructure Project Application **must meet all** criteria below:

- Is this project necessary to support local growth?
- Has match funding and financial commitment been secured?
- Is the project deliverable within 1-5 years?

Each project will be scored on the following:

Evidence of Need - What evidence that local people support the project - maximum score = 5

- Petitions
- Support from Local Council (Parish/Town Council) or Community Group (Parish Meeting), as appropriate
- Support from Local Elected Members (Ward Councillors)
- Support from Community Groups
- Letters of support from new/existing users
- Fundraising Initiatives
- Support from County Council/Professional Bodies

9.0.1 Finance and Deliverability

- Amount of CIL funding requested
- Details of proposed expenditure
- Amount of funding committed to the project by applying any match funding
 - 1 – 10% = 1 Point
 - 11 - 20% = 2 Points
 - 21-30% = 3 Points
 - 31-40% = 4 Points
 - 41+% = 5 Points

CIL DRAFT Governance and Spending_2023

9.0.2 Project Timescale

- Start date:
 - 0 – 6 months = 5 Point
 - 6 – 9 Months = 4 Points
 - 9 – 12 Months = 3 Points
 - 12 – 18 Months = 2 Points
 - 18 Months + = 1 Point

The Spending Panel will consider the amount of development within each Parish making an application, and also how much CIL Infrastructure funding has already been allocated to that Parish/Ward.

Draft CIL Governance Document 2023