



Homelessness & Housing Delivery Task Group
Thursday, 29th February, 2024 at 11.00 am
**in the Council Chamber, Town Hall, Saturday Market
Place, King's Lynn PE30 5DQ**

**Reports marked to follow on the Agenda and/or Supplementary
Documents**

1. **Update on Homelessness Figures (Pages 2 - 5)**

Contact

Democratic Services
Borough Council of King's Lynn and West Norfolk
King's Court
Chapel Street
King's Lynn
Norfolk
PE30 1EX
Tel: 01553 616394
Email: democratic.services@west-norfolk.gov.uk

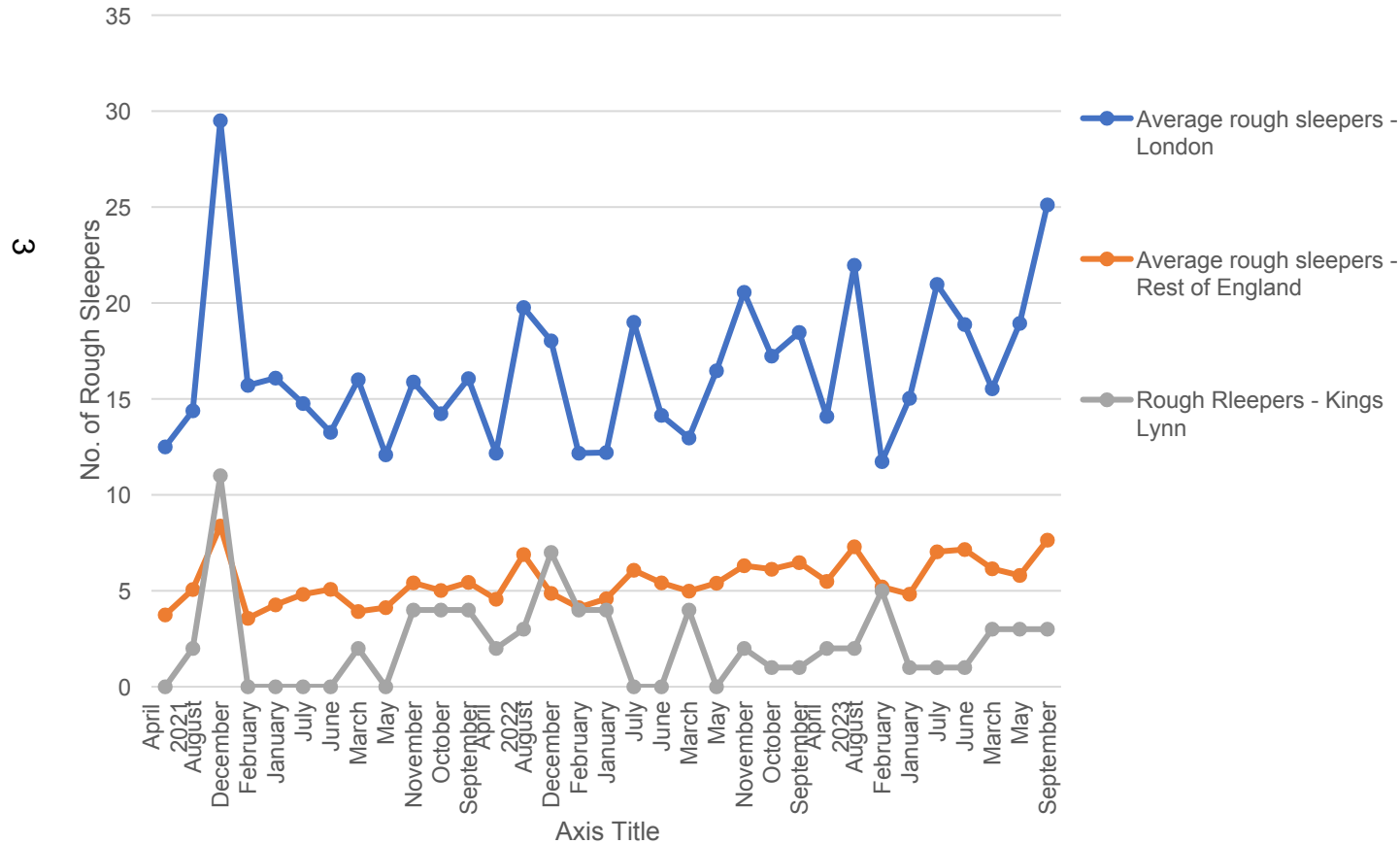
Homelessness update February 2024

2



Number of people sleeping rough

Rough Sleepers



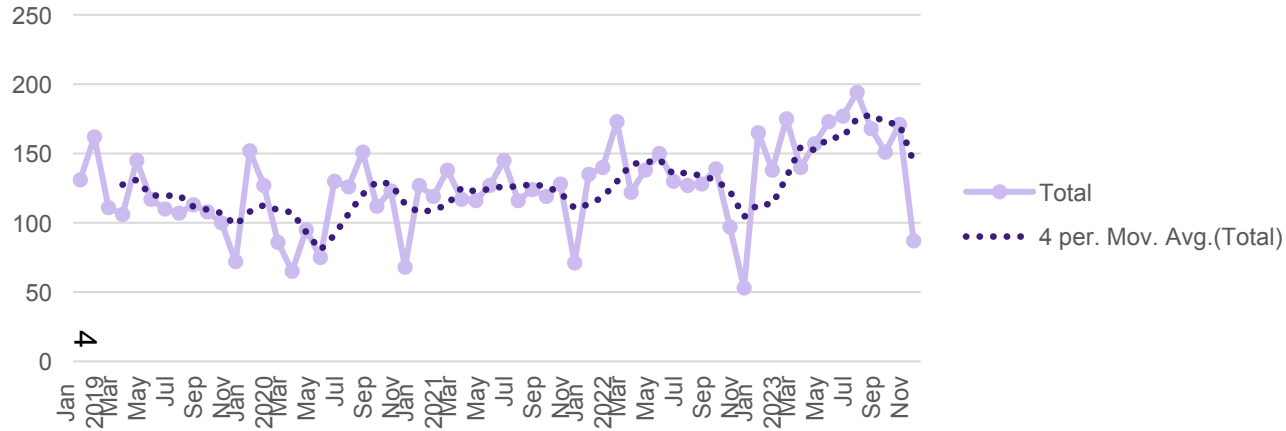
This shows the number of people reported to be sleeping rough in a month for King's Lynn and West Norfolk, nationally (excl. London) and London boroughs.

The number of reported rough sleepers throughout the month has continued to remain comparatively low, despite an increase in support needs and pressures around move on accommodation.

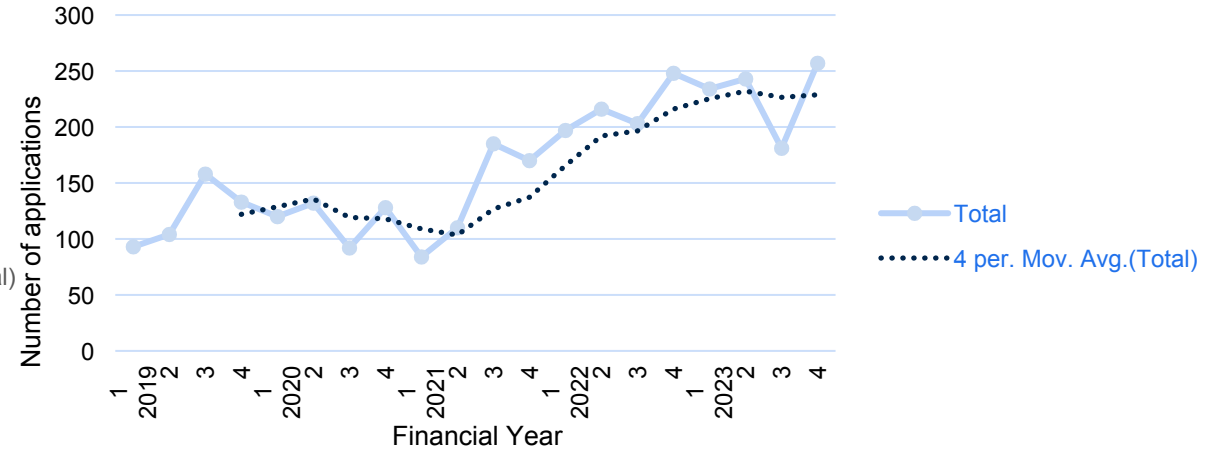


Number of approaches for assistance

Number of new or change of circumstances submitted for review for social housing



Total number of Homeless applications taken

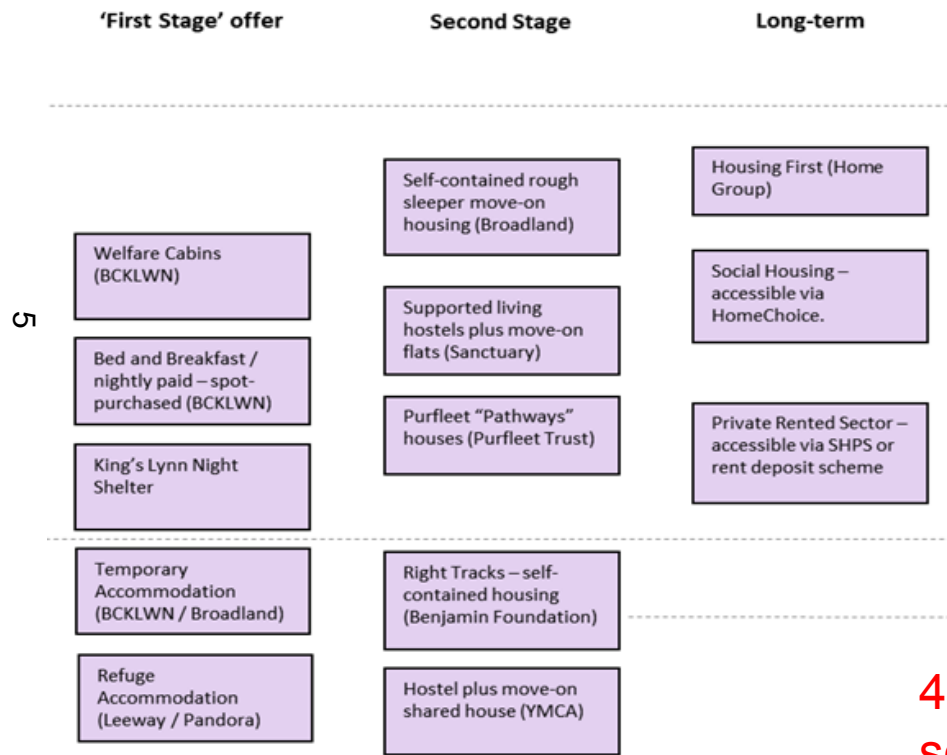


This shows the number of people approaching for access to social housing either by **completing a new application**, or updating their application following a **change of circumstances**

This shows the number of initial approaches for housing advice approaches which demonstrated a **reason to believe they were homeless or threatened with homelessness within 56 days** and a **formal Homeless application** was taken



Accommodation options

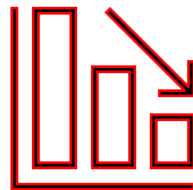


This is the accommodation pathway for customers who approach as Homeless, or who are working with the local authority to attempt to prevent their homelessness.

There is a **significant delay in accessing long-term accommodation**, which is causing households to remain in the first and second stage of accommodation for longer periods of time.

- **Housing First** – lack of available properties
- **Social housing** - lack of properties made available by housing associations; increased need in the borough
- **Private rented** - increased difficulty in accessing due to affordability and lack of supply

41% Decrease in available social housing (2021 – 2023 properties advertised)



325% Increase in households with a Full Housing Duty owed awaiting social housing (LAHS return 2020 -2021 Vs 2022-2023)

